

SMART Solutions

Connected System Overview

Third party system and service expansion

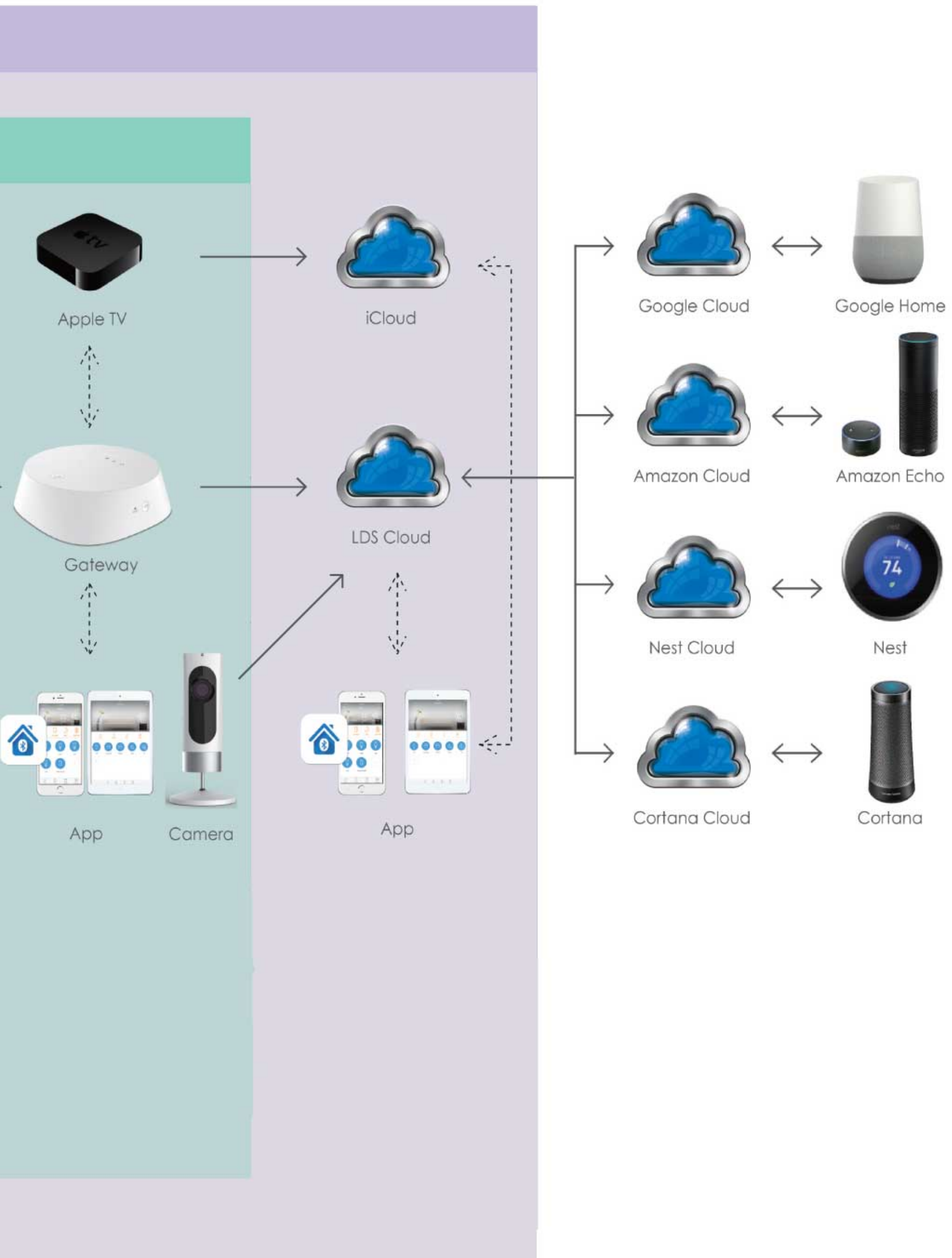
Remote control and video surveillance

Local smart control

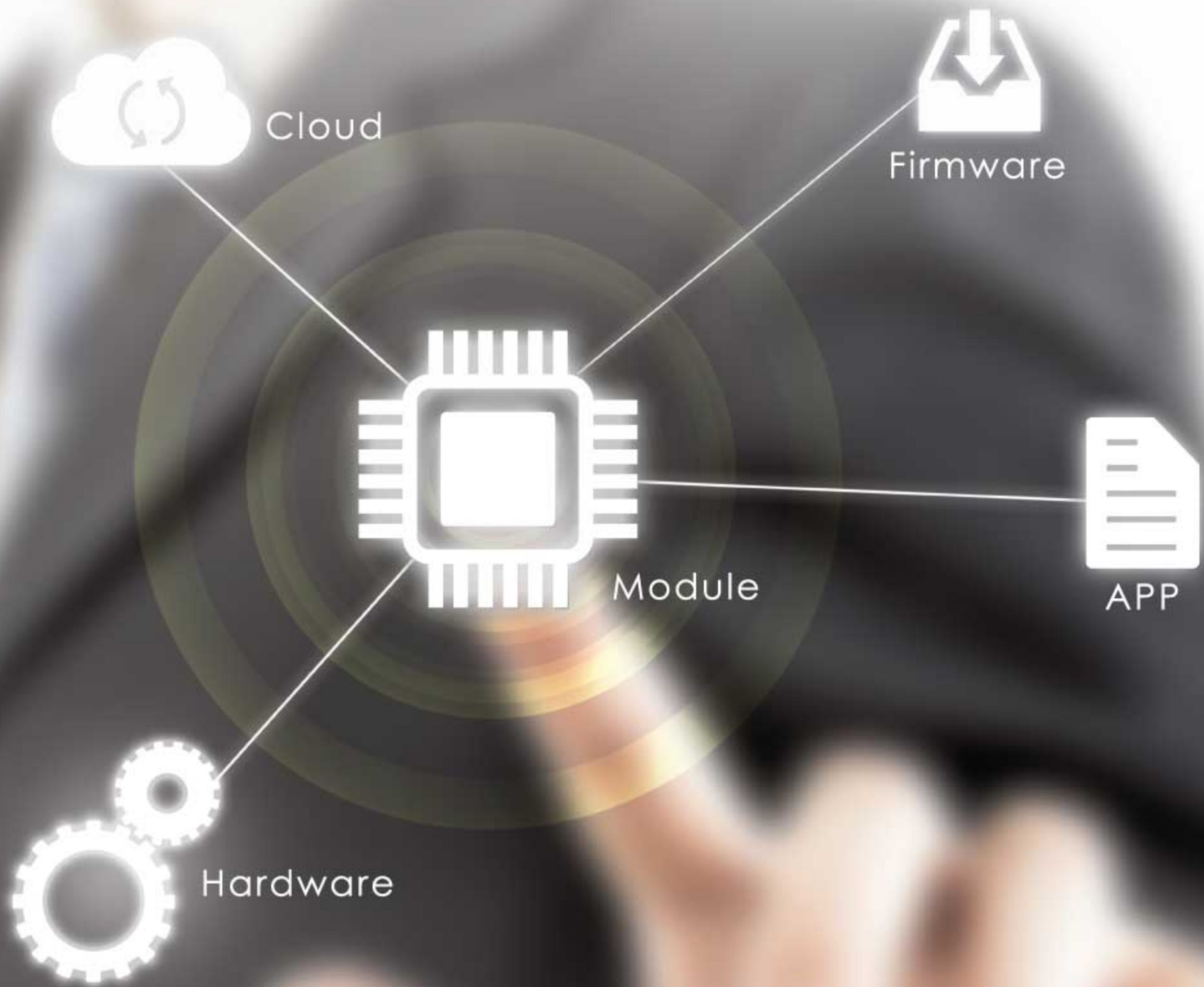


Local manual control





Technology And One Stop Buying



Support
Protocols



Support
Platforms



Content

Smart LED Tube	05
Connected A60	06
PAR16	07
RGB+W Light Strip	08
Connected Downlight	09
Wired Zigbee Gateway	10
Motion & Light Sensor	11
Temperature & Humidity Sensor	12
Door/Window Sensor	13
Remote Controller	14
Smart Plug	15
Smart Connector- EU	16
Smart Connector- Micro	17
User Manual	18-27

Features

- Communication between the sensor and LED tubes is done using the ZigBee® standard.
- Installation is done with a screwdriver.
- Able to control through app or remote control.

Benefits

- Group control according to customer need.
- Make your home brighter and intelligent.
- Energy Saving.

Applications

- Residential.
- Offices.
- Parking lots.
- Industry Factory



Smart LED Tube (Dimmable)



Model	Watt(W)	Voltage(V)	PF	Lumen(lm)	CCT (K)	Beam Angle	Base	Dimensions (mm)
RLASJT84F16W865	16	220-240	0.9	2400	2700-6500	160°	G13	1198*27.5
RLASJT85F24W865	24	220-240	0.9	3600	2700-6500	160°	G13	1498*27.5

Connected A60

SJT ZB RGBW A BULB



Features

- Wireless control and easy to set up.
- RGBW A60 has up to 16 million colors for customer to choose
- Standard size that is suitable with most fixtures.
- Control A60 of Zigbee protocol product with your voice through selected Alexa devices.
- Work with IOS and Andriod, compatible with most of smart phones.
- On/ off/ dim.

Benefits

- Be creative with 16 million colors in different situations.
- Time setting in App to wake you up and go sleep naturally.
- Group control according to customer need.
- Make your home brighter and intelligent.
- Accord with Energy Star 3.0 that help you save more energy.

Applications

- Residential.



A60 (RGBW)



Model	Watt(W)	Voltage(V)	PF	Lumen(lm)	CCT (K)	Beam Angle	Base	Dimensions (mm)
RLASJRGBW10W65ZZ	10	220-240	0.7	806	1800-6500	240°	E27/B22	120*60



PAR 16

SJT ZB DIM & CCT TUNABLE GU10

Features

- Standard size that suitable for most kinds of fixtures.
- Wireless control and easy to set up.
- Tunable white PAR16 could adjust color temperature with a wide range from warm to cool white.
- COB-like design has great performance in light.
- Work with IOS and Andriod, compatible with most smart phones.
- On/ off/ dim.

Benefits

- Time setting in App to wake you up and go sleep naturally.
- Group control according to customer need.
- Make your home brighter and intelligent.
- Energy saving.

Applications

- Residential, commercial.



PAR16 (Dim &Tunable White)



Model	Watt(W)	Voltage(V)	PF	Chip	Lumen(lm)	CCT (K)	Beam Angle	Base	Dimensions (mm)
RLASJDC05127GU10	5.1	220-240	0.5	SMD	350	2700-6500	25/36/40	GU10	54*50
RLASJDC05427GU10	5.4	220-240	0.5	COB	350	2700-6500	25/36/40	GU10	54*50

Light Strip RGB+W

SJT ZB RGBW LIGHT STRIP



Features

- Low-voltage power supply/ Block the security menace.
- Low working temperature/ Low light failure/ Long life.
- Up to 16 million colors for customer to choose.
- On/ off/ dim.

Benefits

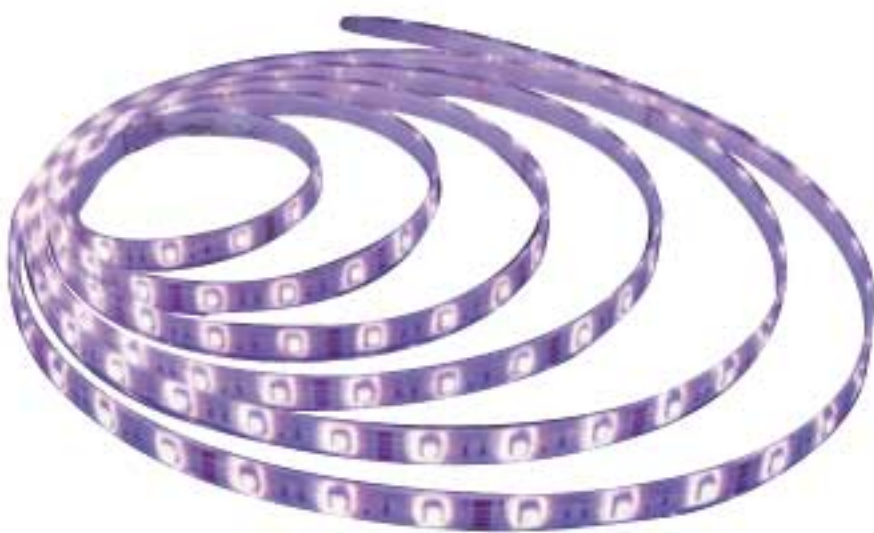
- Be creative with 16 million colors in different situations.
- Make your home brighter and intelligent.
- Energy Saving.

Applications

- Residential, Outdoor



LED Strip RGB+W



Model	Watt(W)	Lumen(lm)	Color Temperature	Rated Factor	Dimensions (mm)	IP Class
RFMSJZBL12W0502M	12	500	1800-6500K	0.5	12*2000mm	IP20
RFMSJZBL24W1255M	24	1250	1800-6500K	0.5	12*5000mm	IP20

Connected Downlight

SJT ZB TUNABLE WHITE DOWNLIGHT

Features

- Die casting design to provide low temperature of chip and long lifespan.
- Recessed trim for incredible aesthetics.
- On/ off/ dim and tunable white functions.
- No glare brings comfortable lighting experience.

Benefits

- Energy saving.
- Make your home brighter and intelligent.

Applications

- Residential, Commercial.



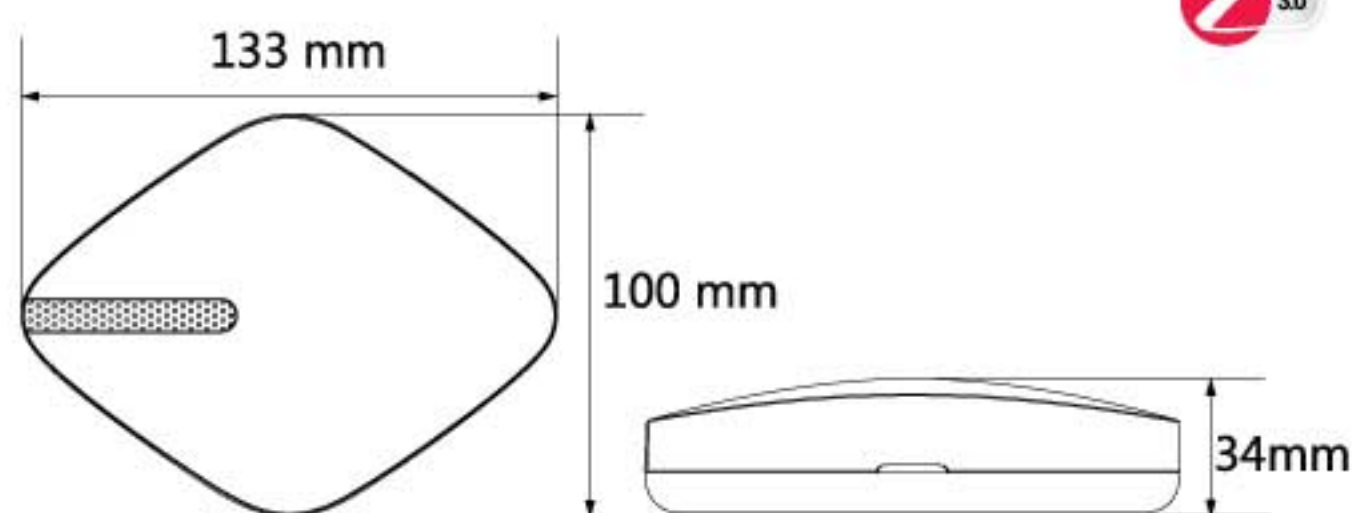
Downlight (Tunable White)



Model	Watt(W)	Voltage(V)	PF	Lumen(lm)	CCT (K)	Dimension (mm)	Cutout (mm)
XDLSJZBAFA10W654	10	220-240	0.9	800	2700~6500	120*52	Φ100
XDLSJZBAFA15W656	15	220-240	0.9	1200	2700~6500	170*58	Φ150

Zigbee Gateway

SJT ZB GATEWAY DIAMOND

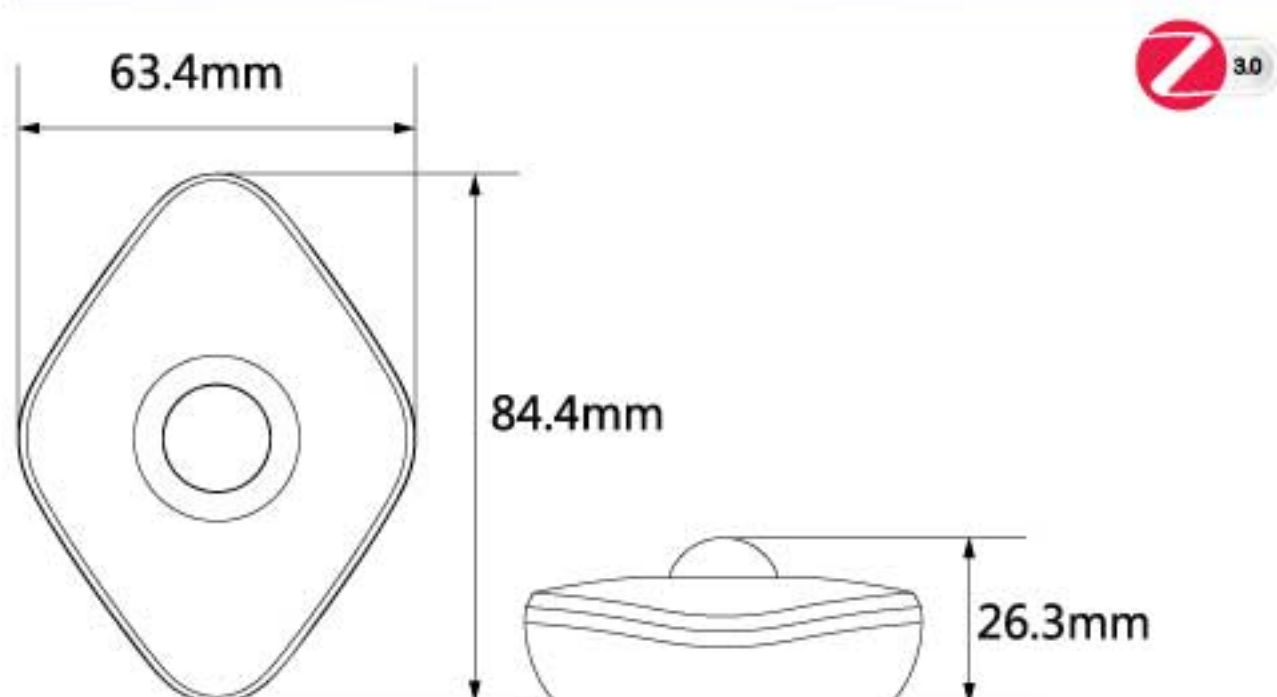


- Complies with zigbee 3.0 protocol to work with any standard zigbee 3.0 devices and backward compatible.
- You can add up to 40 accessories or lights to one bridge linked to ethernet via your router.
- Invisible antenna design.
- Set timers and alarms, connect to an App, dim the light and collect the sensor data.

Input Voltage	DC5V
Input Current	Max 2A
Control	Local Control/ Remote Control
Connectivity	Ethernet
Operating Temperature	-20℃ ~ 40℃, -4°F ~ 104°F
Operating Humidity	5% ~ 95% RH, Non-condensing
Button	Pair/ Reset

Model

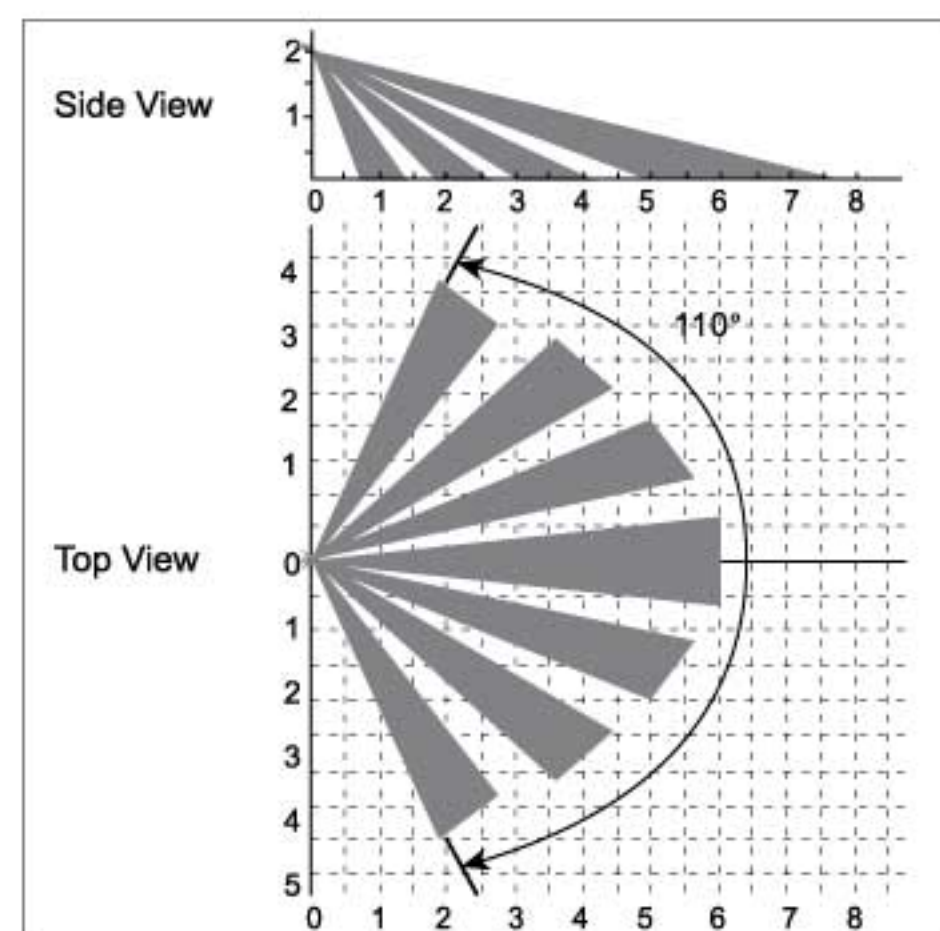
RZZSJZBDIAGATWAY



- Complies with zigbee HA 1.2 profile to work with any standard ZHA zigbee hub.
- Integrate motion and light sensor for more scenario applications.
- Low voltage alarm to remind changing battery.
- Easy installation by screws or 3M adhesive tape.



Detection Technology	PIR (Passive IR)
Built-in Light Level	10 lux (For 24H or night mode)
Detection Angle	110°
Coverage	10m x 6m @110°
Radio Frequency	2.4GHz
Wireless Range	130 ft (40m) LOS
Power Source	3V, CR2450 x 1
Battery Life	2 years
Mounting	Screws or 3M Tape
Mounting Height	Wall 6.5 ft. ~8.5 ft. (2m~ 2.6m)
Operating Temperature	-10°C ~ 45°C, 14°F ~ 113°F
Operating Humidity	Up to 85%, Non-condensing

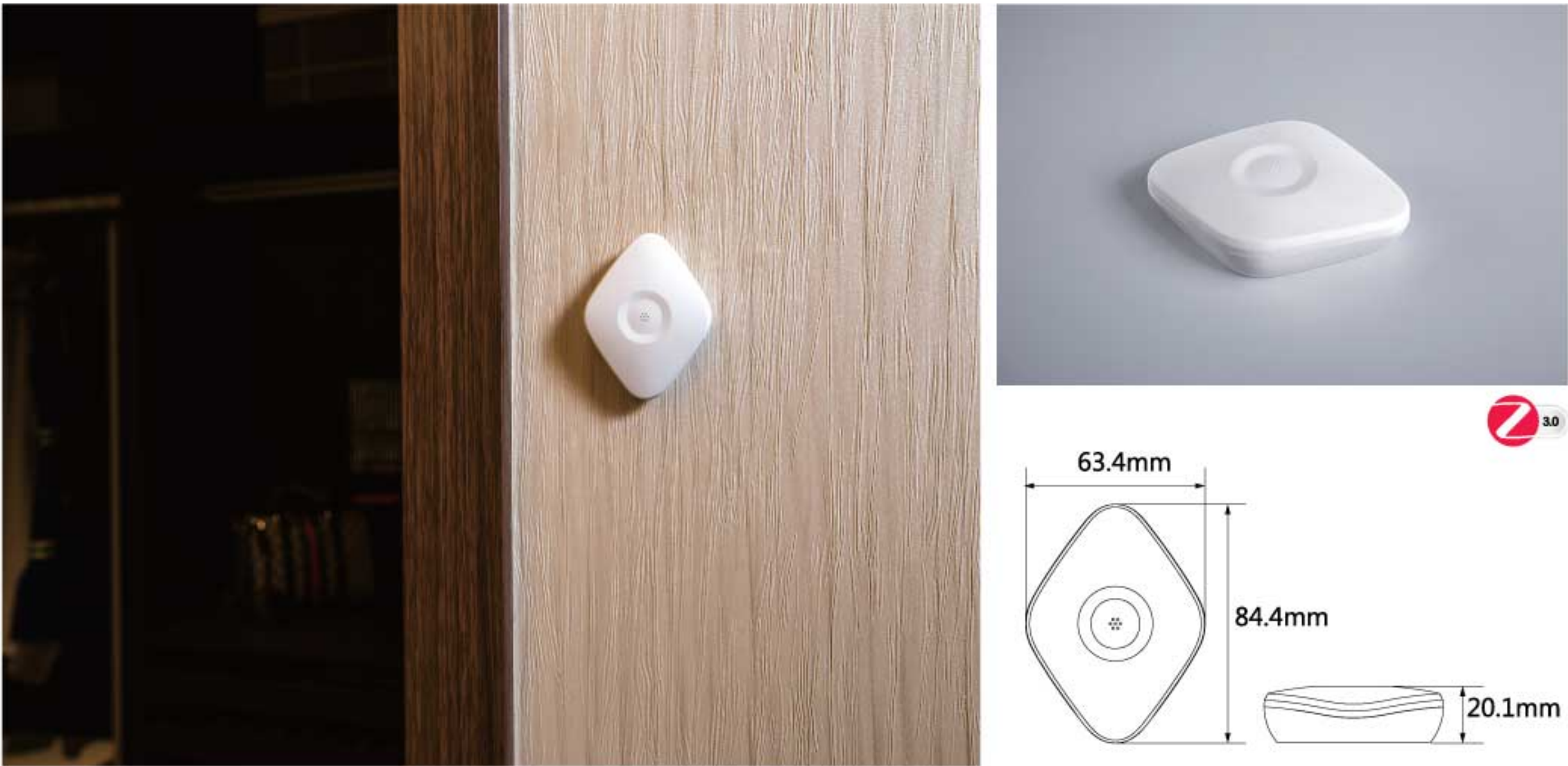


Model

RZZSJZBSENMONLGH

Temperature And Humidity Sensor

SJT ZB TEMPERATURE AND HUMIDITY SENSOR



- Complies with zigbee3.0 profile to work with any standard zigbee3.0 hub.
- Integrate temperature and humidity sensors in a small form factor case.
- Support more accurate detection for major temperature and humidity range.
- Easy installation by screws or 3M adhesive tape, easy to use.

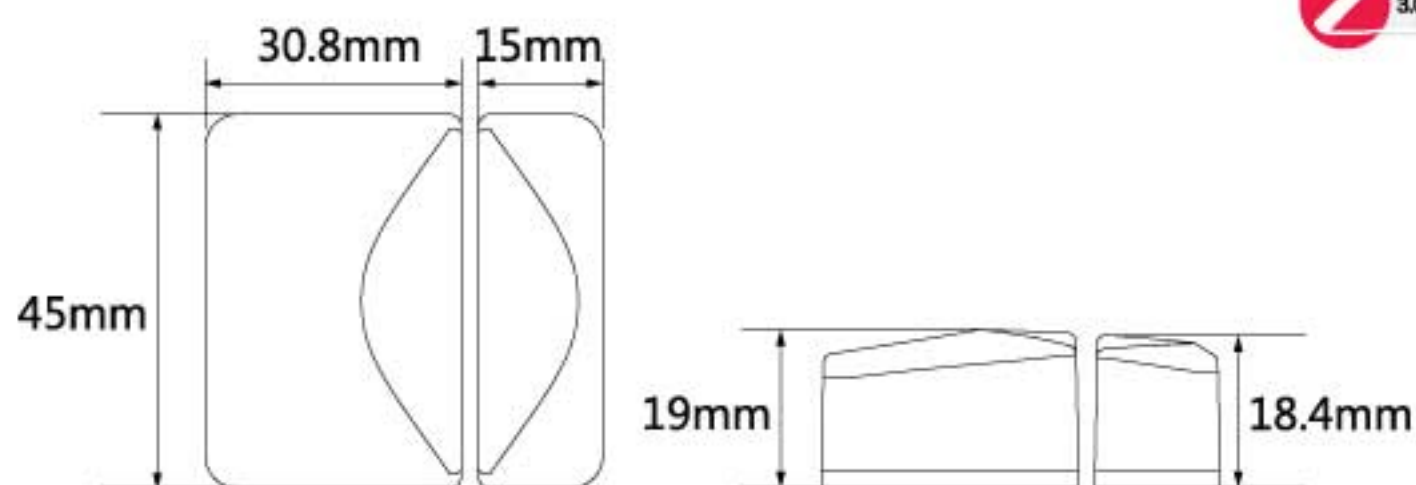
Temperature Sensing	32°F - 113°F (0°C - 45°C)
Temperature Accuracy	± 1°C
Humidity Sensing	0 - 85% RH
Humidity Accuracy	± 5%
Temperature-alert Detection	It can be changed by user(app)
Humidity-alert Detection	It can be changed by user(app)
Radio Frequency	2.4GHz
Wireless Range	130 ft. (40m) LOS
Power Source	3V, CR2032 x 2
Battery Life	2 Years
Mounting	Screws or 3M Tape
Operating Temperature	0°C~45°C,32°F~113°F
Operating Humidity	Up to 85%, Non-condensing

Model

RZSJZBSENTPEHUM

Door/Window Sensor

SJT ZB DOOR & WINDOW SENSOR



- Complies with zigbee HA 1.2 profile to work with any standard ZHA zigbee hub.
- Easy installation by screws or 3M adhesive tape.
- Low voltage alarm to remind changing battery.
- Well design to match your door/window installation.

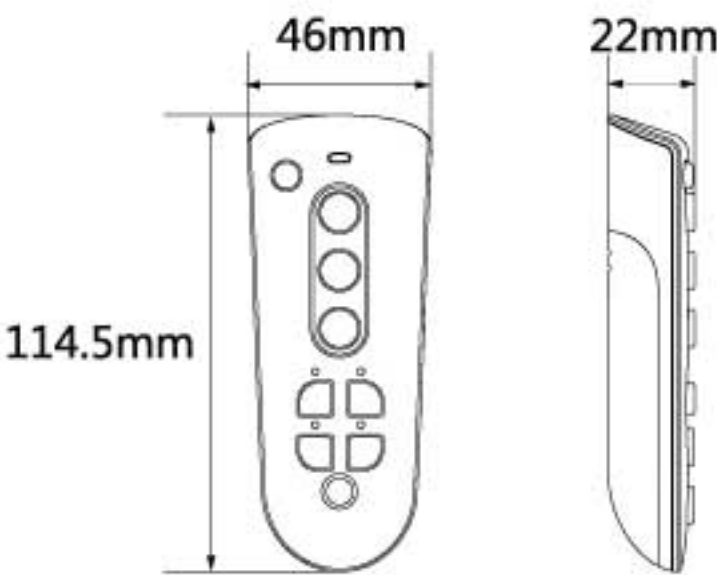
Detection Technology	Magnetic switch
Detection Range	20 mm
Radio Frequency	2.4GHz
Wireless Range	130 ft. (40m) LOS
Power Source	3V, CR2032 x 1
Battery Life	2 years
Mounting	Screws or 3M Tape
Operating Temperature	-10°C ~ 45°C, 14°F ~ 113°F
Operating Humidity	Up to 85%, Non-condensing

Model

RZZSJZBSENWINDOR

Remote Controller

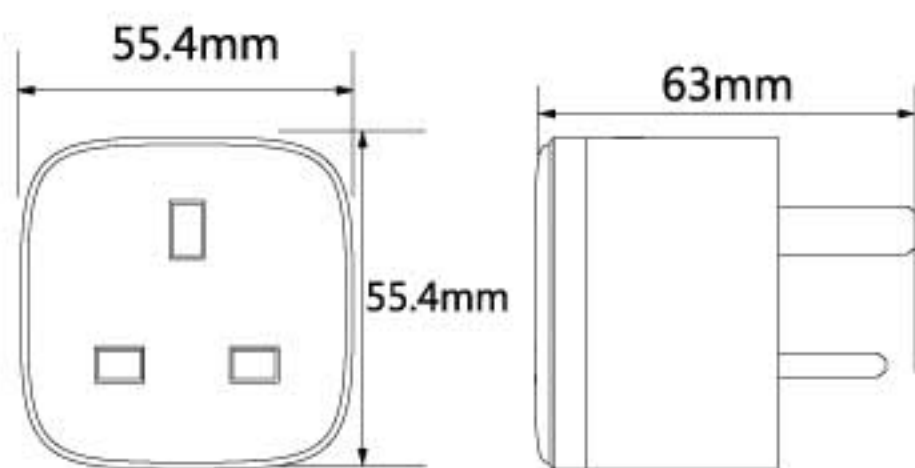
SJT ZB DIM & CCT REMOTE CONTROL / SJT ZB RGBW REMOTE CONTROL



- Remotely control one or many bulbs.
- On/off/brightness dimmer/color temperature tuner/ RGBW/ Group.
- Extremely low power consumption.

Operating Voltage	3V
Power Source	AAA x 2
Battery Life	2 years
Operating Range	30m
Operating Temperature	-20℃ ~ 40℃
Operating Humidity	5% ~ 95% RH, Non-condensing
Frequency	2.4GHz
Button	On/off, brightness dimmer, color temperature tuner, group
	On/off, brightness dimmer, color temperature tuner, RGBW, group

Model	Description
RZSJZBDCCTRCORL	DIM & CCT
RZSJZBRGBWRCORL	RGBW, DIM & CCT



- Control your home devices on/off anywhere via the mobile app.
- Automate your home appliances by setting customized schedules.
- Switches on/off the smart plug manually using the button on the front panel.
- Slim design fits with standard wall outlet and leaves the second outlet free.

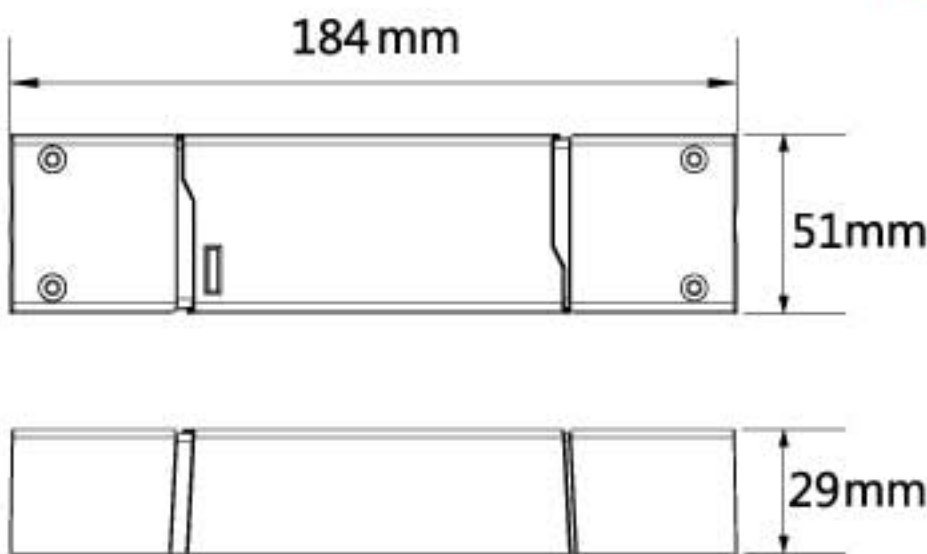
Input Voltage	220-240V \pm 10%, 50/60Hz.
Input Current	Max 10A
Max Load Watts	2300W @ 230VAC
Surge Protection	>1500V
Standby Power	<0.5W
Overload Protection	Yes
Metering Accuracy	Less than \pm 2W under 100W load. Less than \pm 2% over 100W load.
Operating Temperature	0°C ~ 40°C
Operating Humidity	5% ~ 95% RH, Non-condensing
Button	Pair/ Power/ Reset
IP Class	IP20
Frequency	2.4GHz
Product Functionality	ON/OFF, Schedule, Group

Model

RZZSJZBSMARTPLUG

Smart Connector - EU

SJT ZB EU SMART CONNECTOR



- Make Standard 0-10V dimmable fixture connected.
- Predefined light modes for single or open-plan office, corridor, staircases.
- Simple installation outside of luminaires, e.g. troffer.
- Each control unit controls multiple dimmable/switchable luminaires.

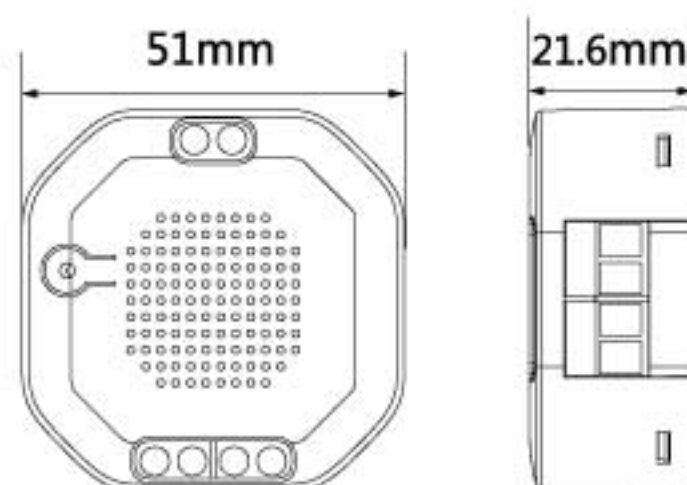
Input Voltage	100-240V, AC 50/60HZ
Input Current	Max 10A
Max Load Watts	1000W @ 100VAC, 2400W @ 240VAC
Surge Protection	>1500V
Overload Protection	Yes
Operating Range	130 ft. (40m) LOS
Operating Temperature	-10°C ~ 40°C
Operating Humidity	5% ~ 95% RH, Non-condensing

Model

RCNSJZBEUSMARTZZ

Smart Connector - Micro

SJT ZB MICRO SMART CONNECTOR



- Turn your existing in-wall switches into smart switches.
- Hidden within the walls of your home.
- Controls your lights on/off anywhere via mobile App.
- Automates your home by setting schedules.
- Slim design fits with any kind of switch.

Input Voltage	100-240V, AC 50/60HZ
Input Current	Max 10A
Max Load Watts	1000W @ 100VAC, 2400W @ 240VAC
Surge Protection	>1500V
Standby Power	< 0.5W
Operating Range	130 ft. (40m) LOS
Operating Temperature	-10°C ~ 40°C
Operating Humidity	5% ~ 95% RH, Non-condensing
Button	Pair/ Reset

Model

RCNSJZBMRSMAZZ

User Manual

Download App

- Free download on any device runs on Apple iOS 8 or above and Andriod 5.0 or above.



Setup Step

1. Gateway

- Open the gateway upper cover. Connect the power adapter cable to micro USB part. Connect the RJ45 cable from router to Gateway RJ45 port.
- Turn on power of both router and gateway will get connection to router upon receiving IP assignment from router automatically.

2. PIR Motion Sensor

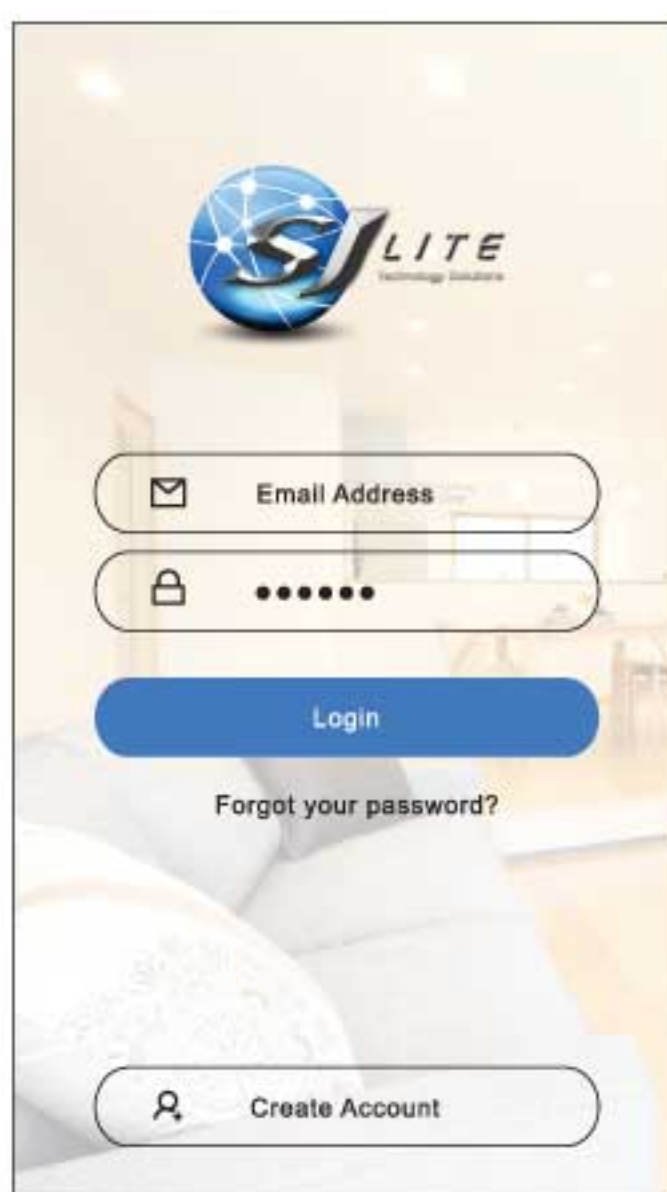
- Remove the wall mount and battery cover.
- Insert 1pcs CR2450 batteries.

3.Window / Door Sensor

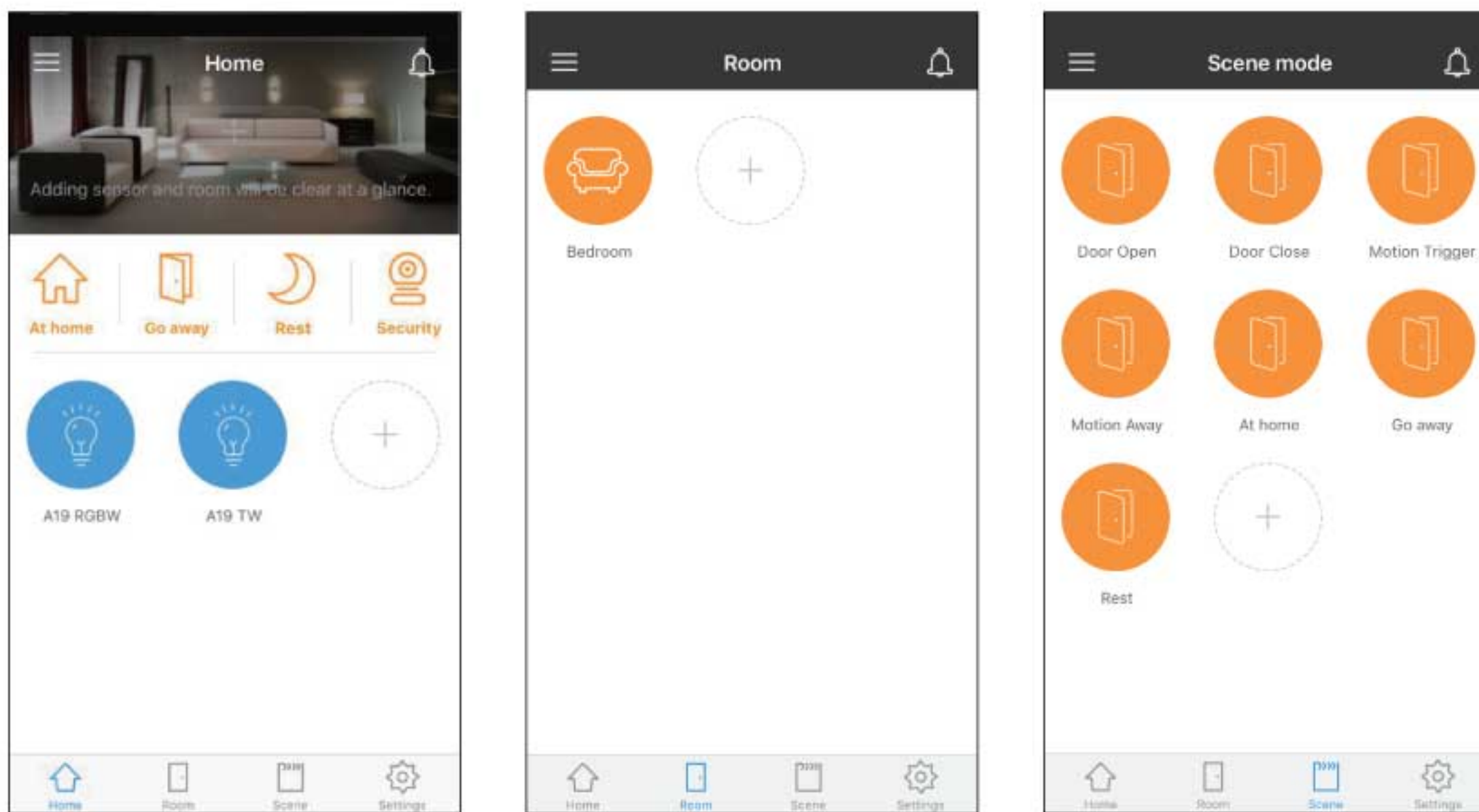
- Remove the wall mount and battery cover.
- Insert 1pcs CR2032 batteries.

Launching App

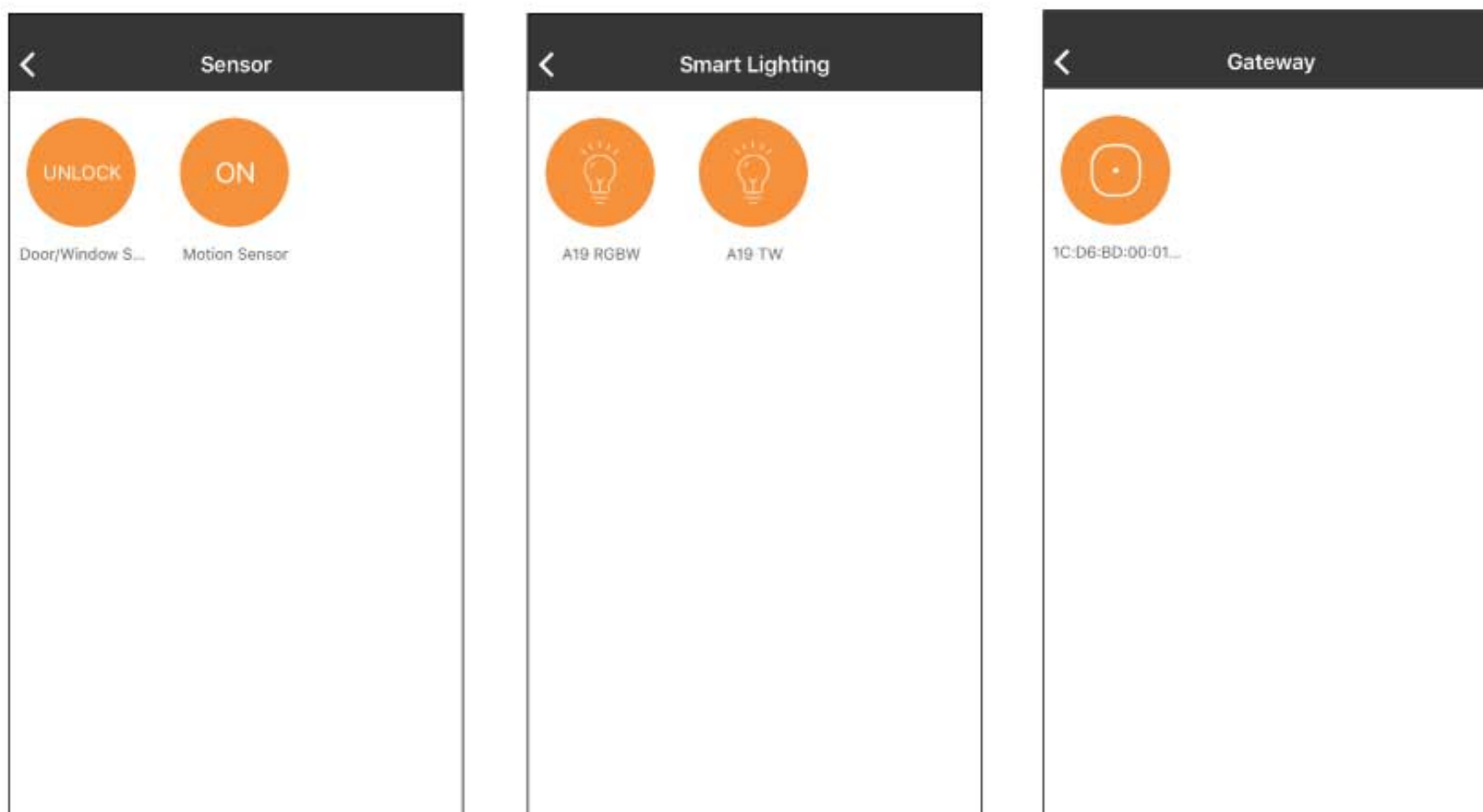
1. Launch the APP, create an account, verify account and log in. Once logged in user should ensure the smart phone/tablet is connected to the same wifi connection as the gateway. User should then first establish a connection to the gateway through "Setting" - "Add device" - "Gateway".



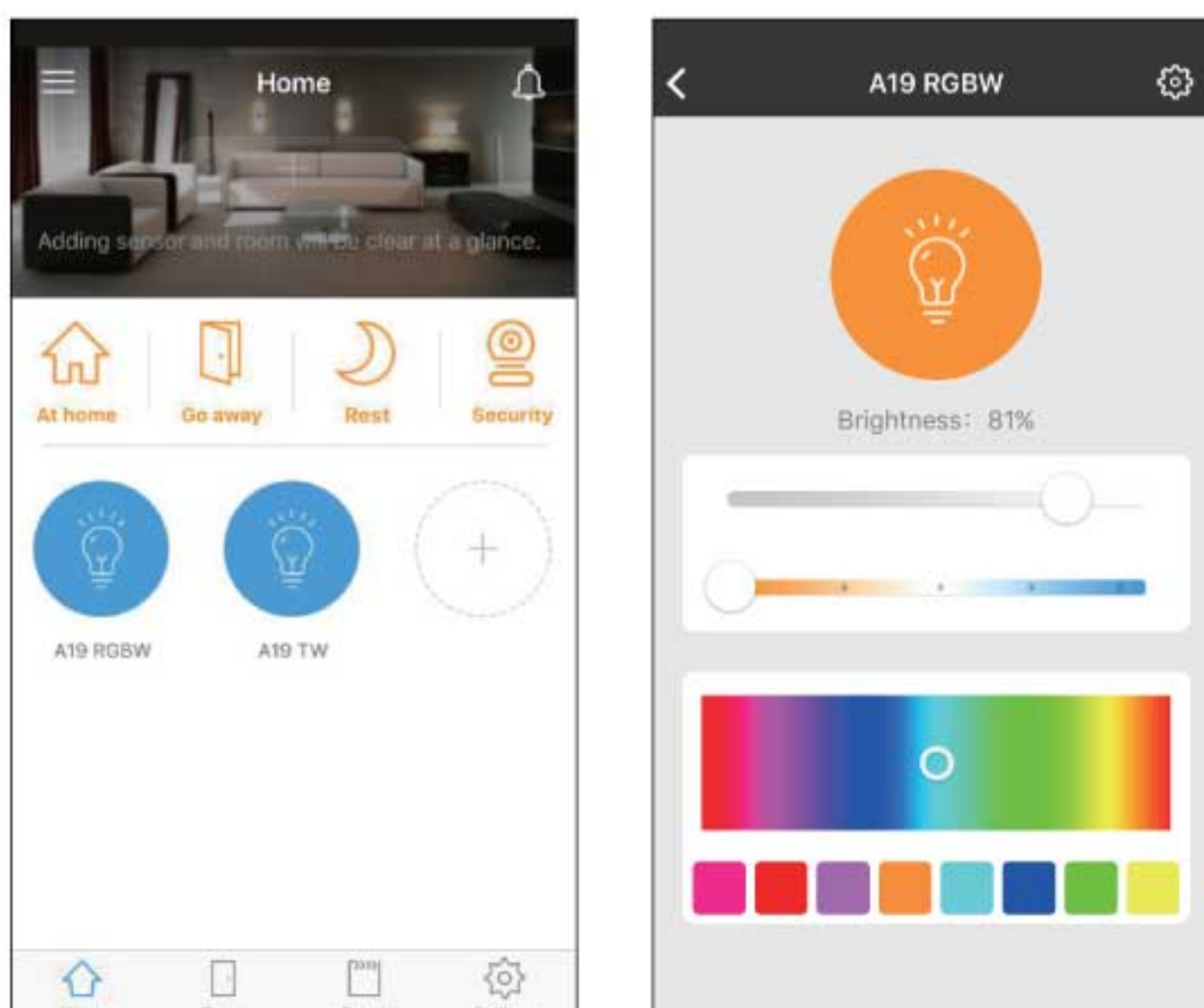
2. User interface is divided into a total of 4 parts. "Home", "Room", "Scene" and "Setting". "Home" show you the shortcut for your quick operation. " Room" enables you to create groups and to control devices in group. "Scene" enables you to create custom scene to fit your scenarios. "Setting" shows you the account information and device lists.



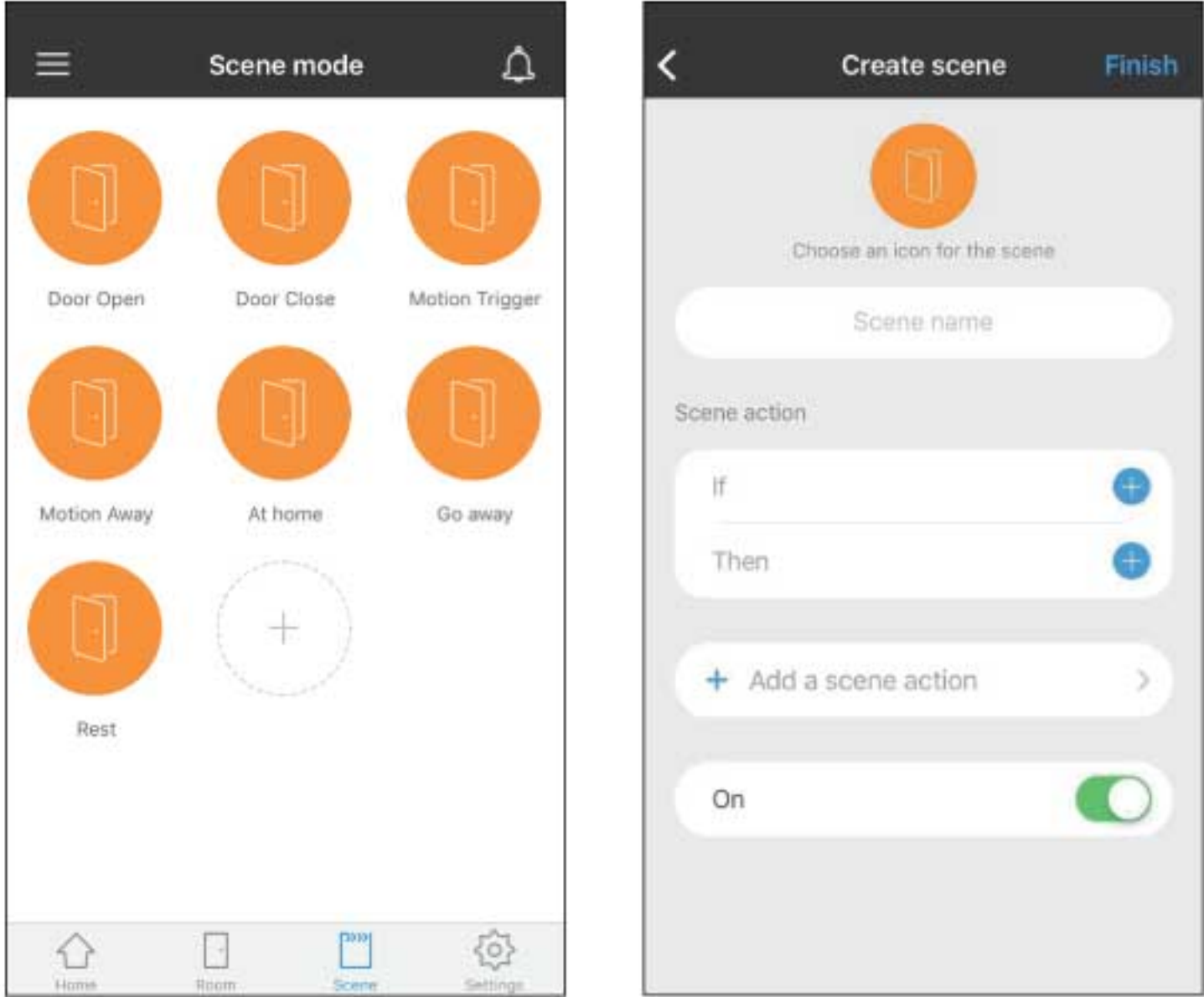
3. If all devices have been setup in advance, and you can find them in "Setting - Device management". You can either control the devices with single tap and long press, or include more devices by tapping the "Add Devices"



4. For your convenience, shortcuts have been created and show the icons on the "Home" page. You can either control the bulb with single tap and long press, or add more shortcuts tapping the "+" sign.

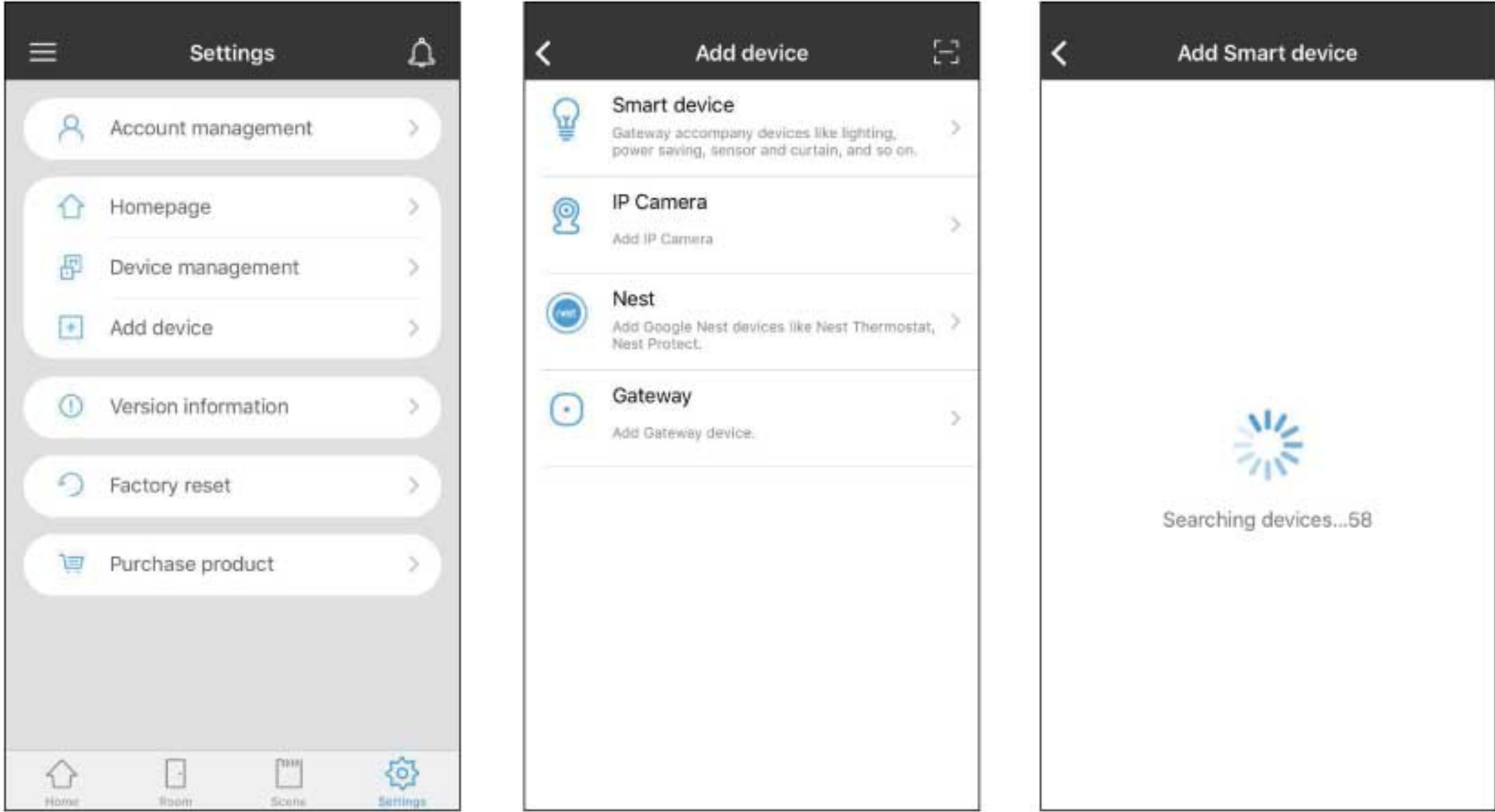


5. Automated lighting scenes, which enable the interaction between sensors and bulbs, have been setup in advance, and you can find them in "Scene" page. you can either long press the scene icon to edit, or add more scenes tapping "+" sign.



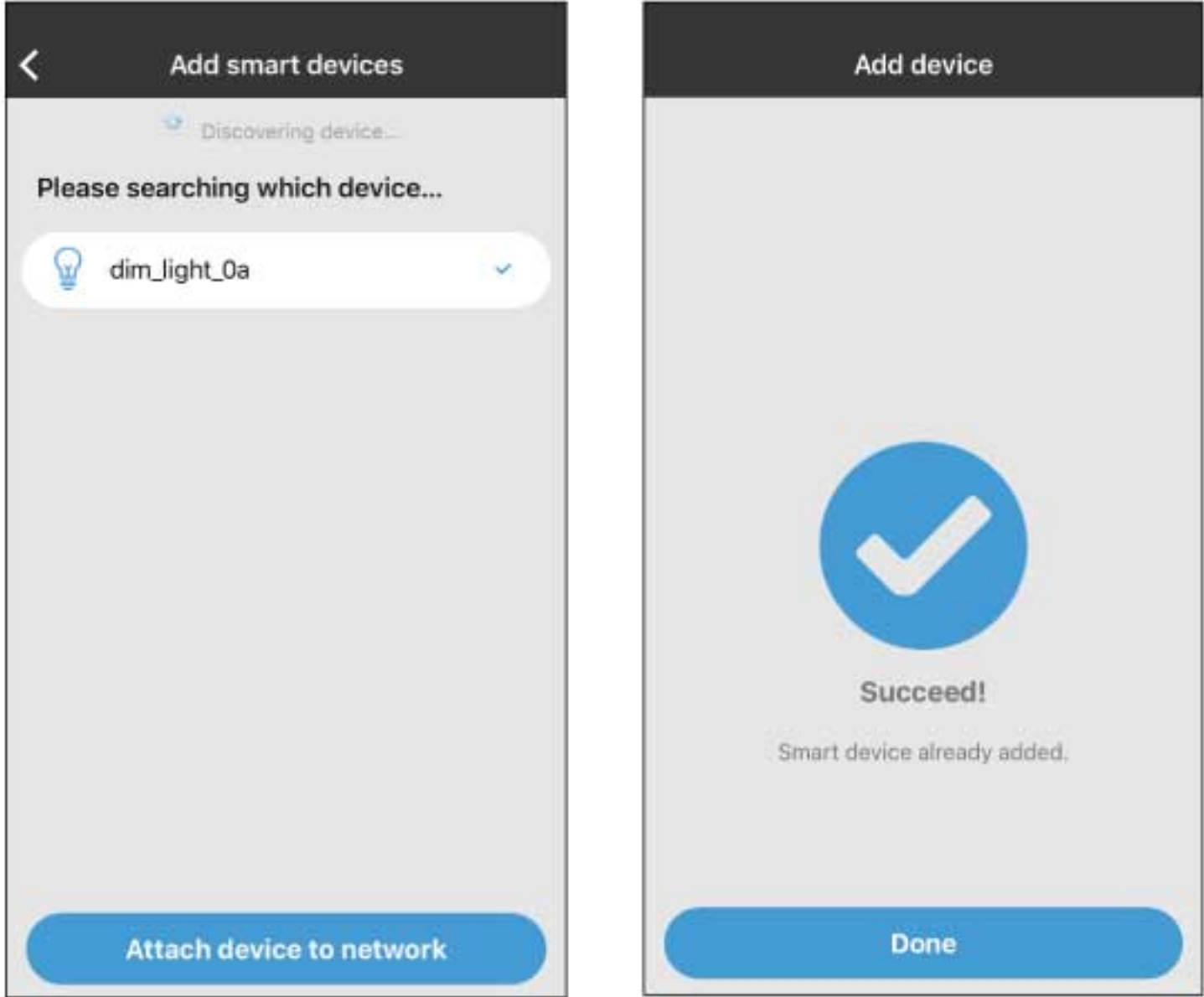
Add Light

1. Click "Setting" - "Add devices" - "Smart device"



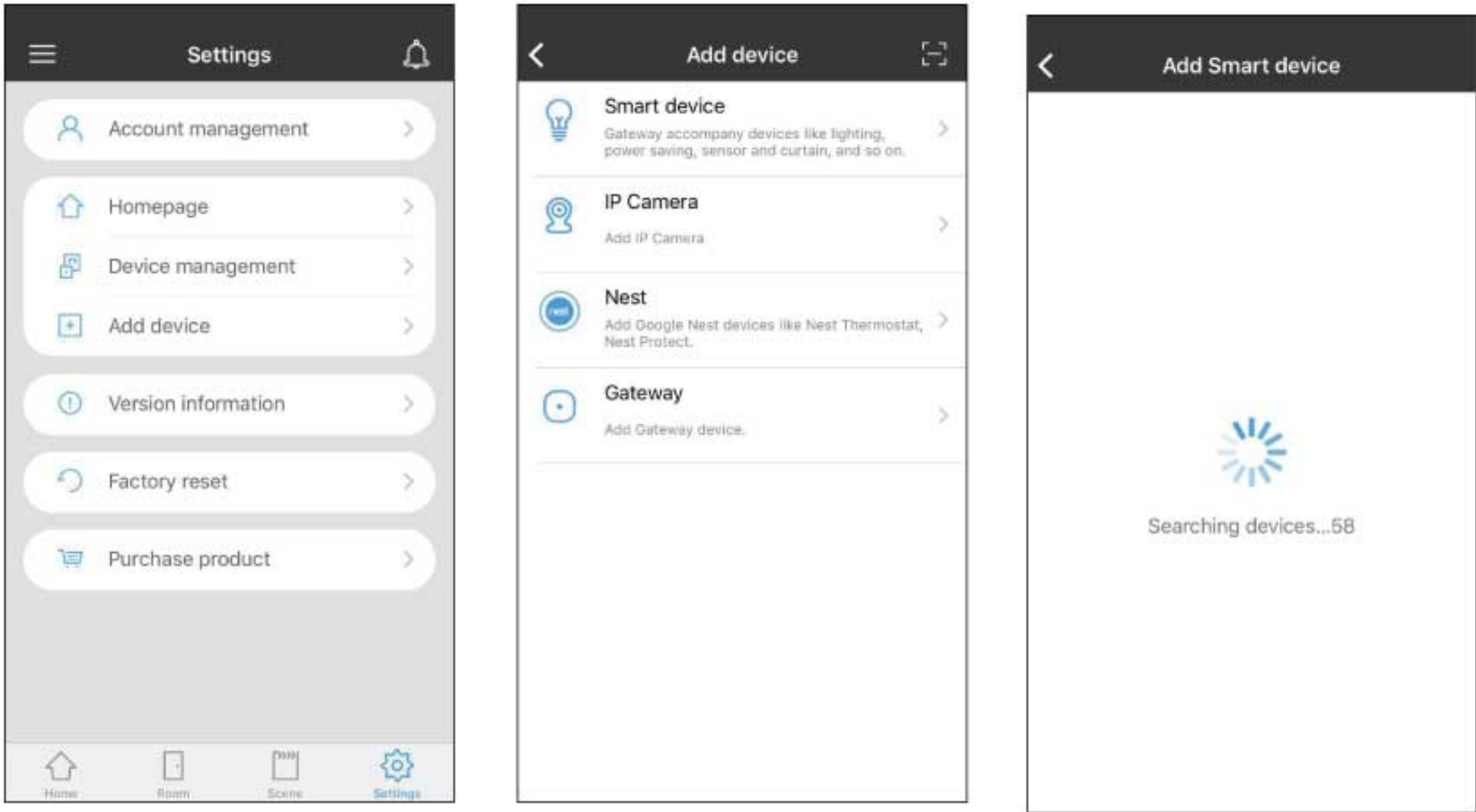
2. Turn switch on, if light will flash twice means it is under factory default mode.
(Make sure the light is under factory default mode, or you should physically switch on and off for 5 times within interval of 2 second, bulb will flash twice after reset successfully.)

3. After pairing successfully, bulb will flash once, then you could control the bulb by App.



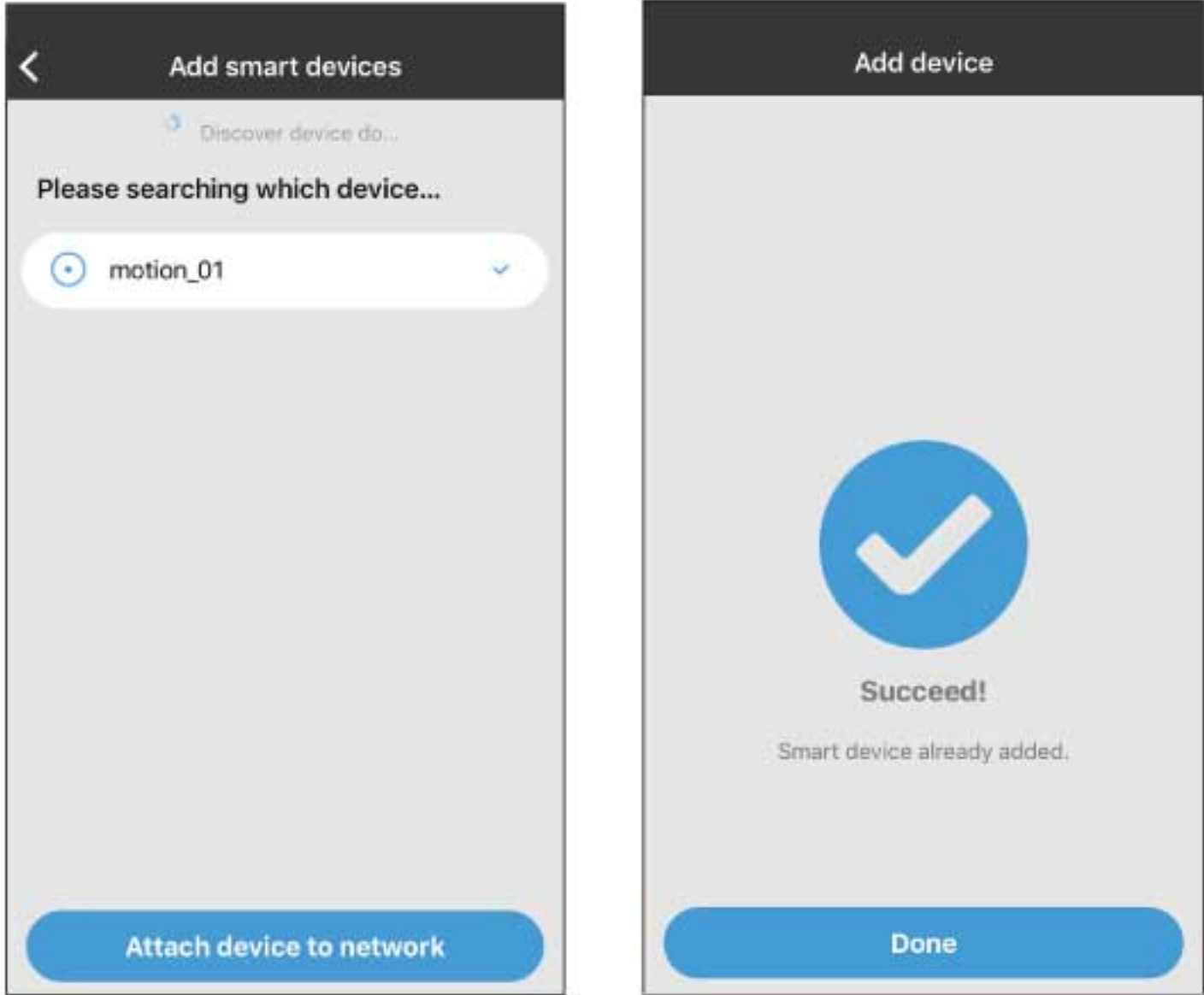
Add Sensor

1. Click "Setting" - "Add devices" - "Smart device"

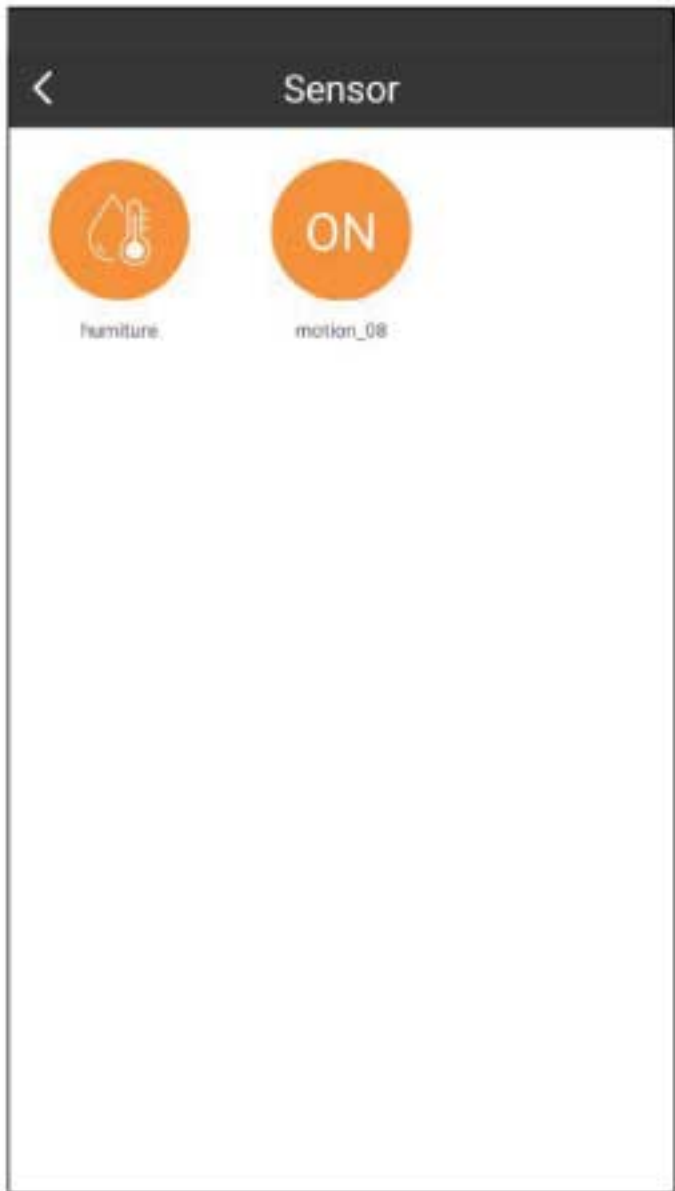


2. Click reset button for 3 seconds, sensor LED will be blinking.

3. The LED will stop blinking and turn off until joining gateway successfully.



4. Sensor status could be found in "Setting" - "Device management" - "Sensor"

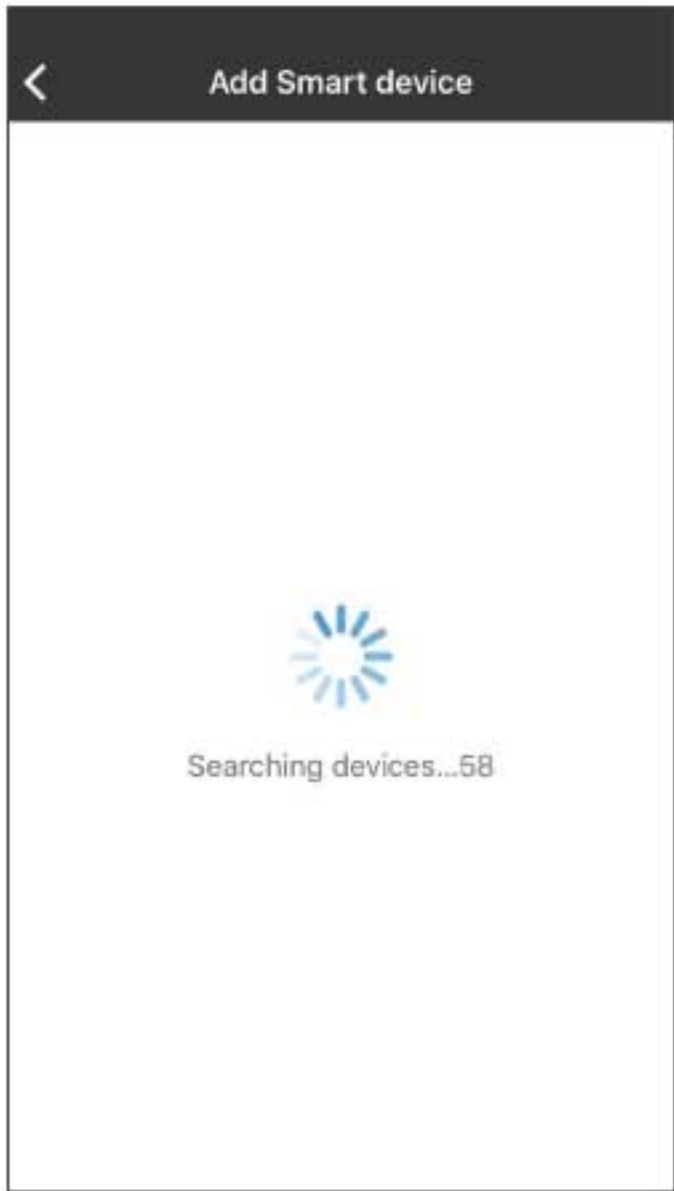
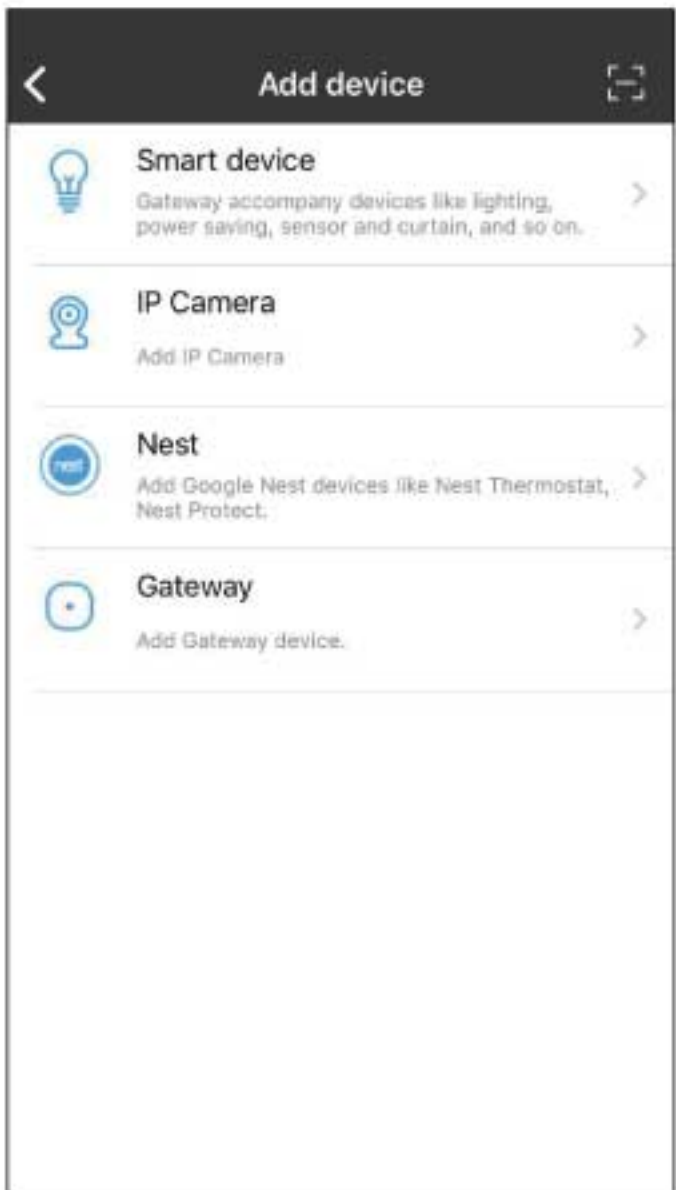
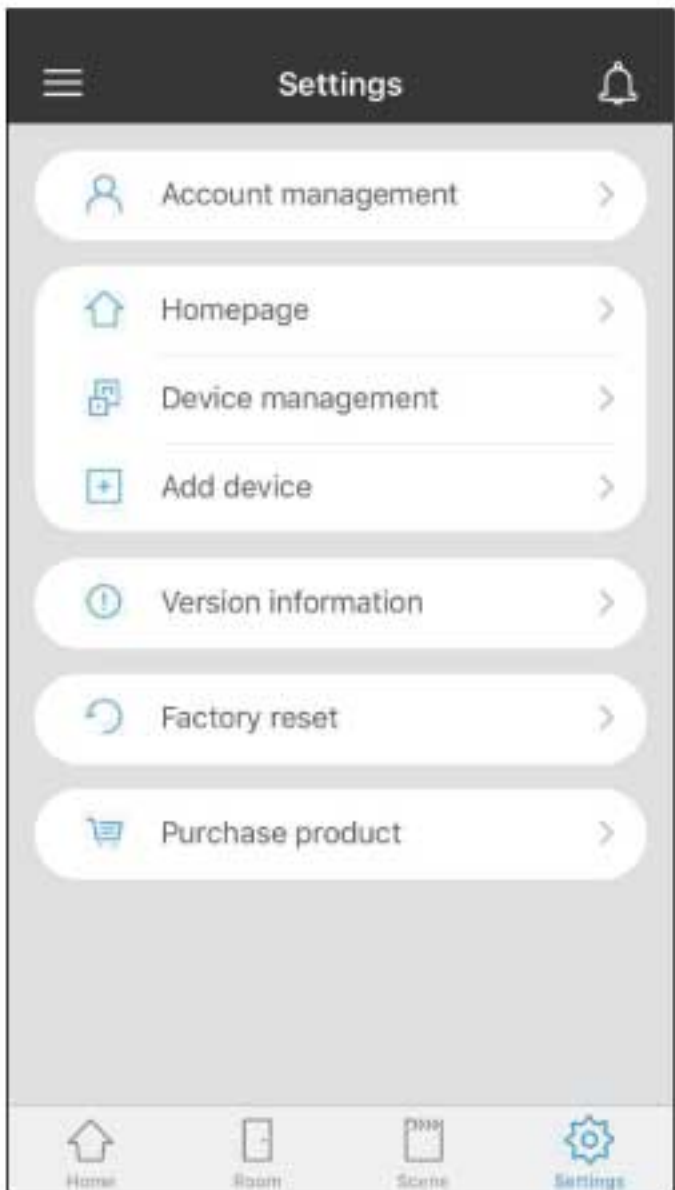


Add Remote (With Gateway)

1. Click red program button and power button until the LED indicator blink twice then the remote will reset to factory setting.



2. Click "Setting" - "Add devices" - "Smart device"

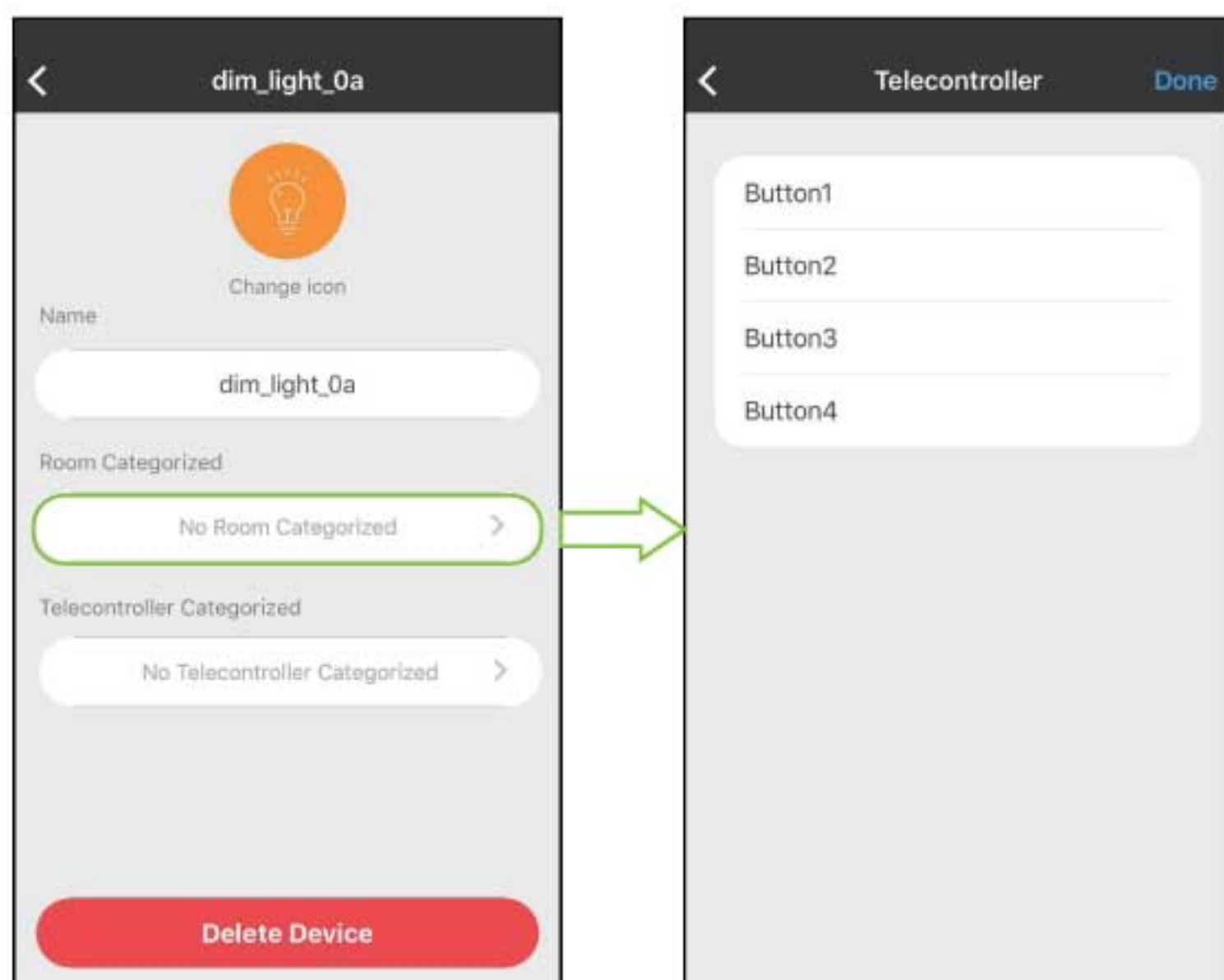


3. Click red program button and "+" key for 3 seconds, LED indicator will be blinking.



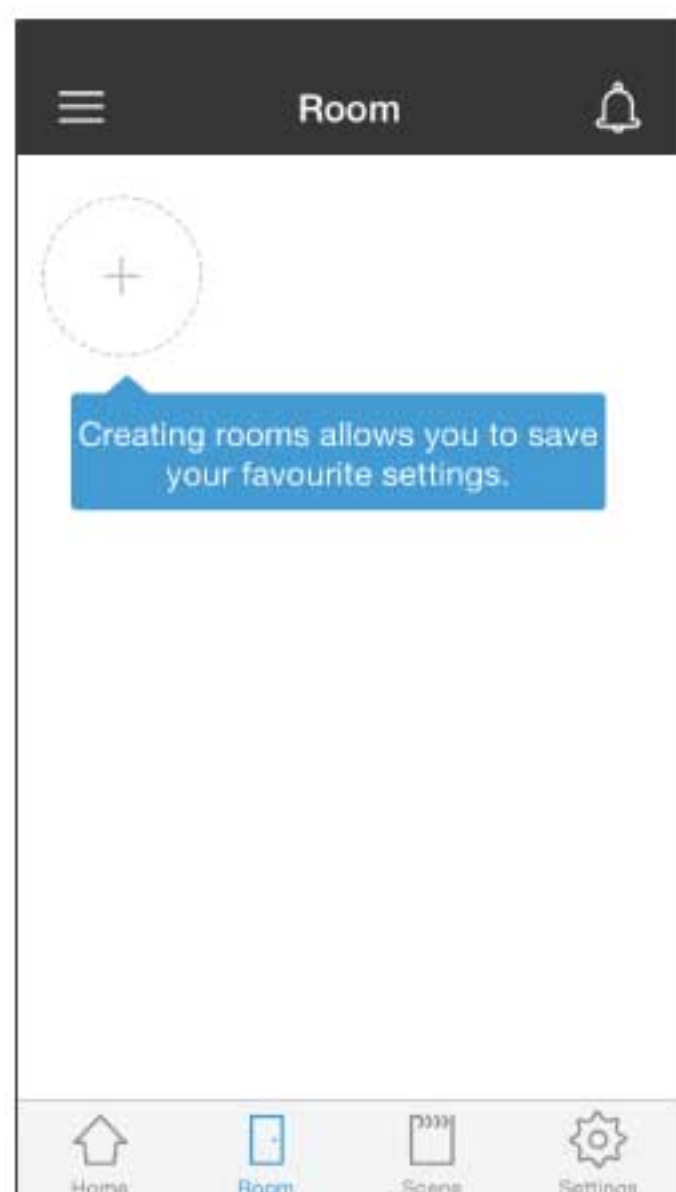
4. The LED indicator will stop blinking until joining gateway successfully.

5. Remote isn't shown in APP, but in light control page you can divide the light into different groups. Press "On/Off" key + red program button for 3 seconds. The remote control will be reset to factory default.

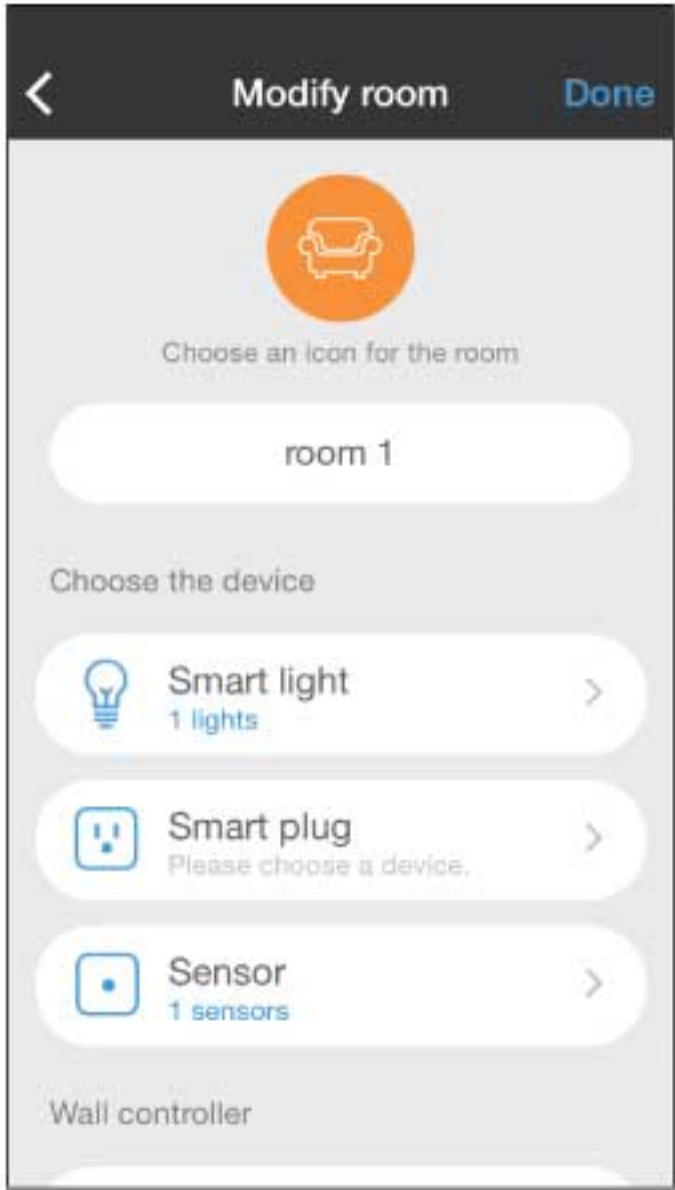


Create Room

1. Enter the "Room" page, tap "+" to create room.



2. In “Modify room”, user could edit room name, room icon, add device.



3. Sensor data will show in top of room interface; short press on icon could the device on or off; long press on icon will enter to device control interface.

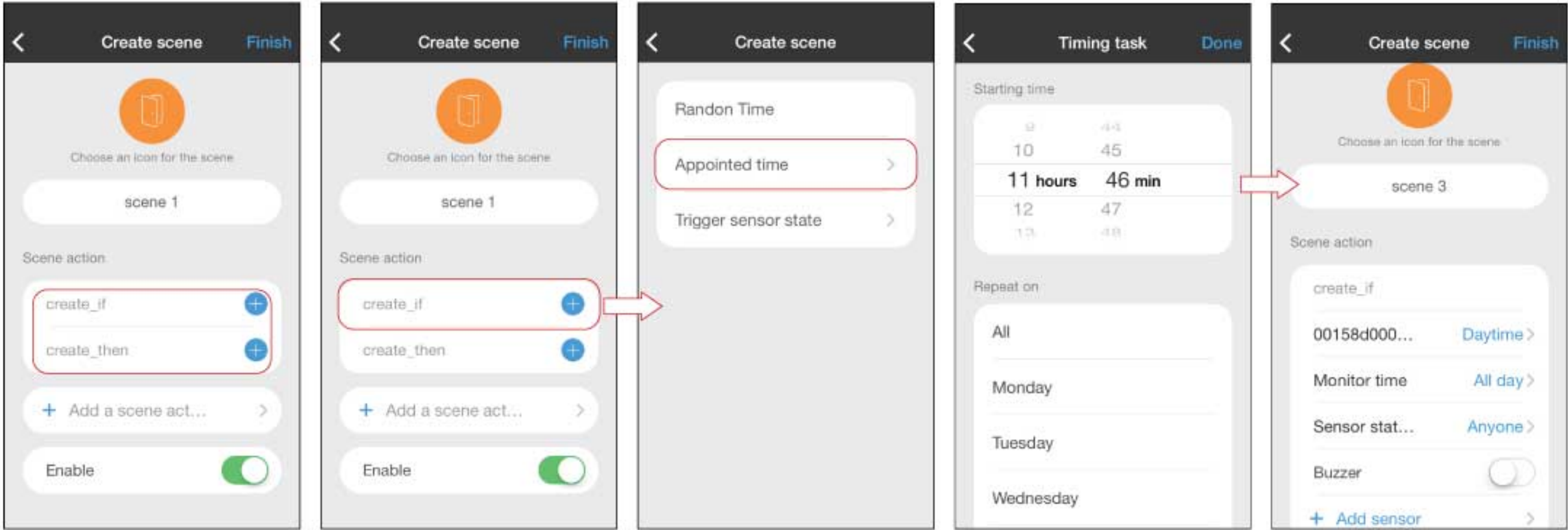


Scene

1. In the “Scene mode”, short press to activate scene; Long Press to edit scene.

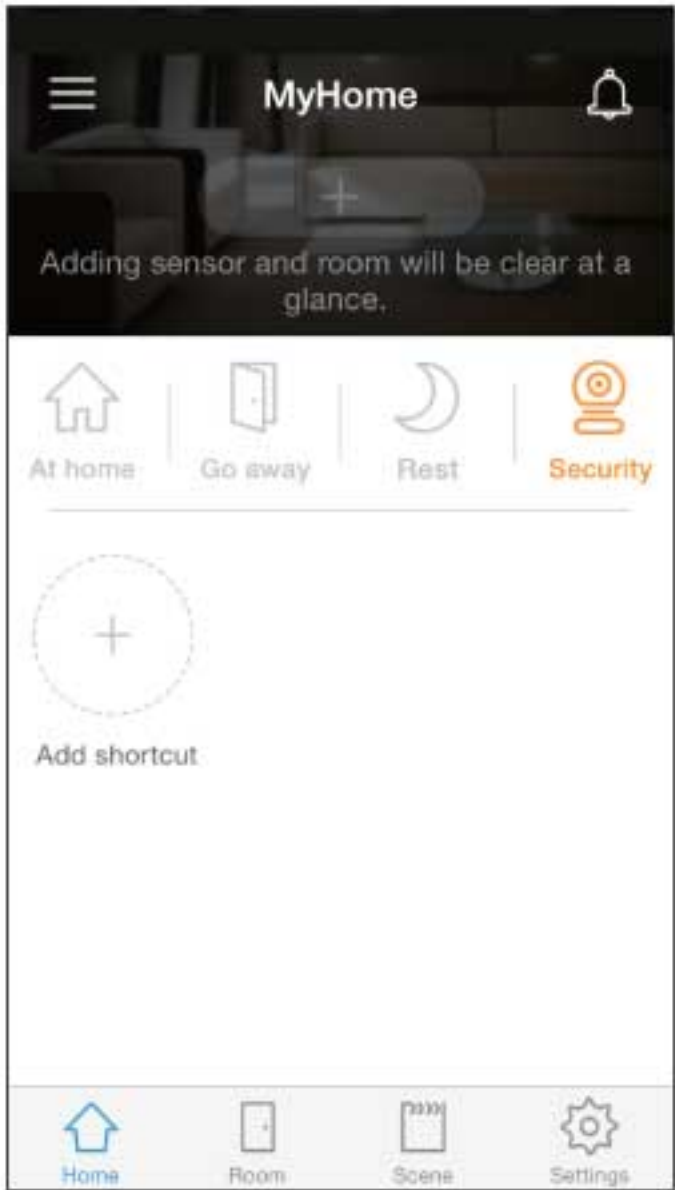


2. Tap "+" to "create scene", enter scene name, scene action, creating "if..." and "then...", one scene could interactive with different devices.

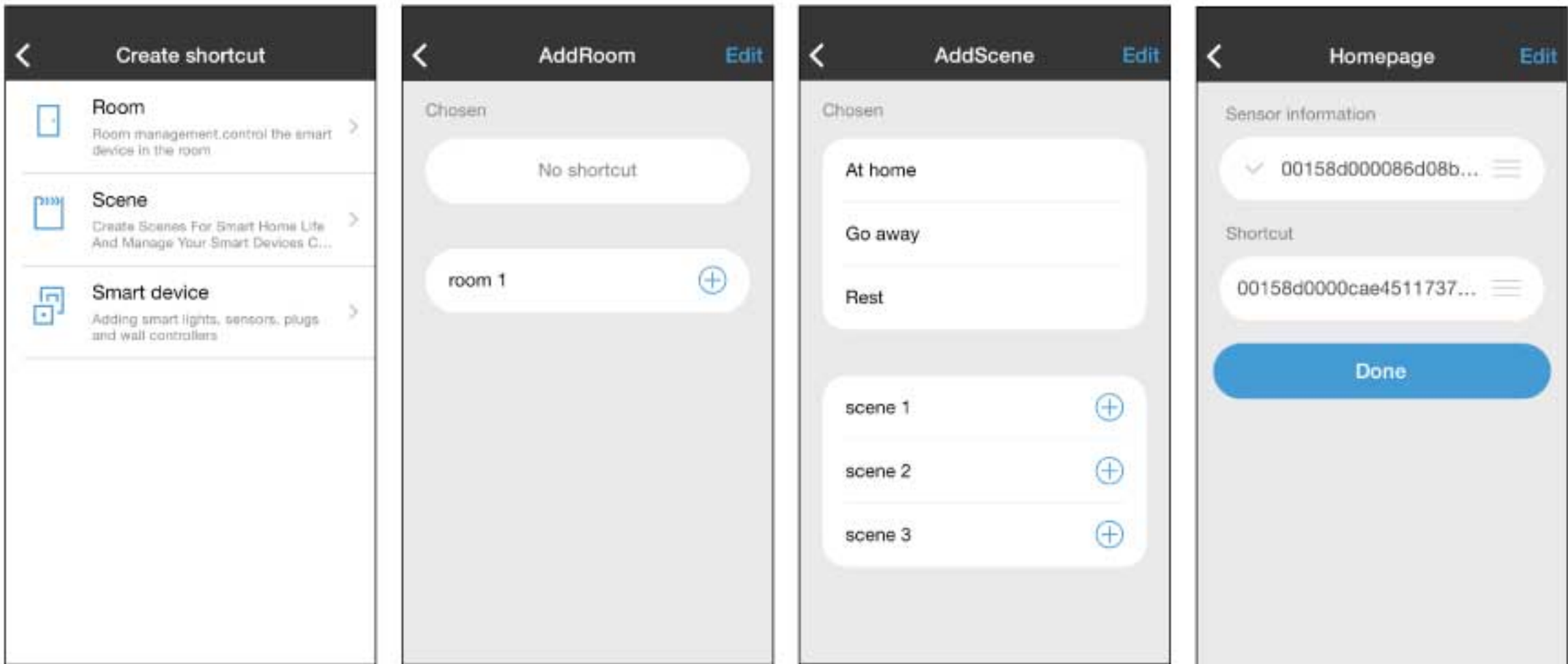


Shortcut

1. Shortcut is to link to room, scene or device that user often use. Tap "+" to add shortcut.

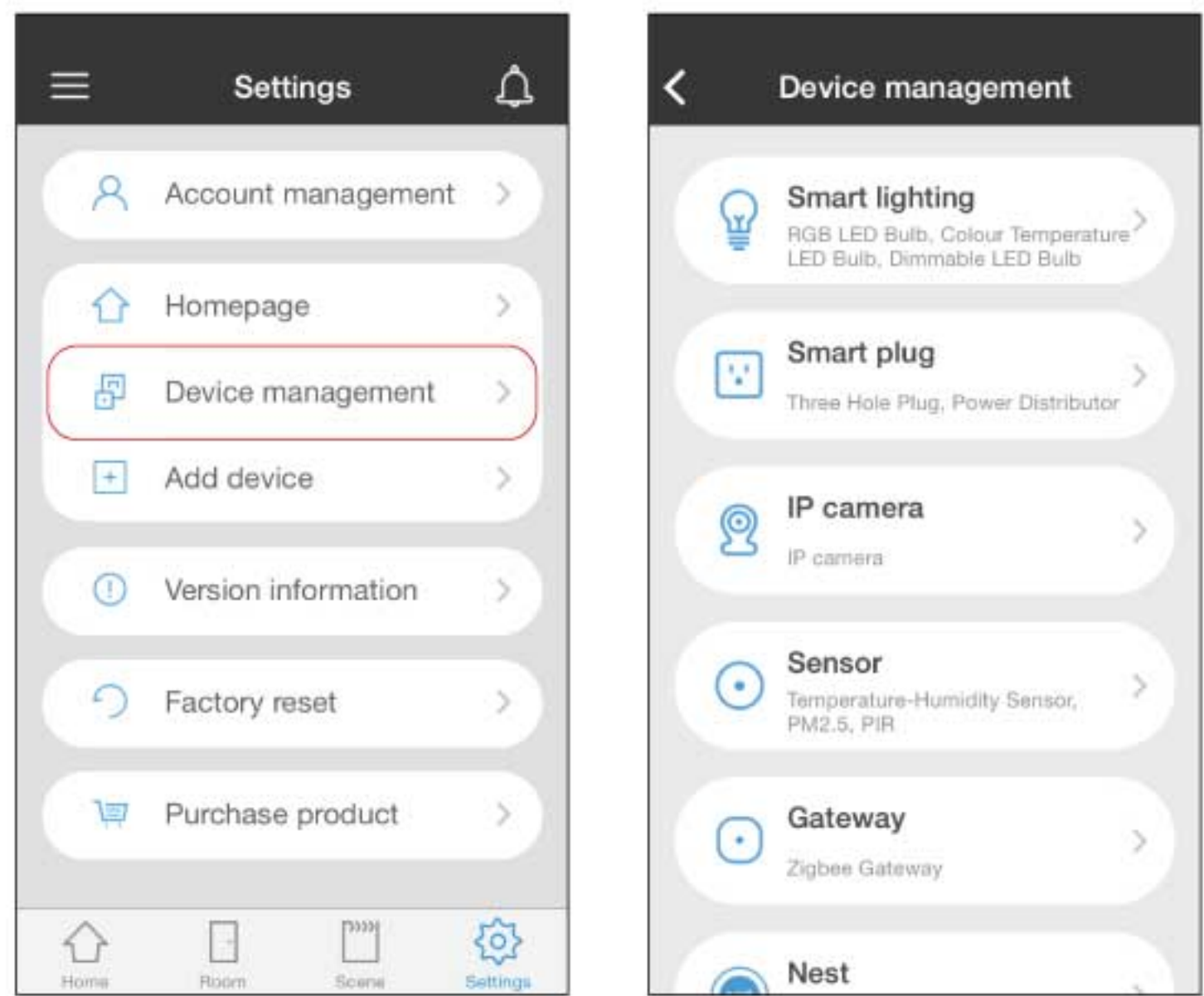


2. Room, scene and device that have been added or created already could be linked to shortcut.

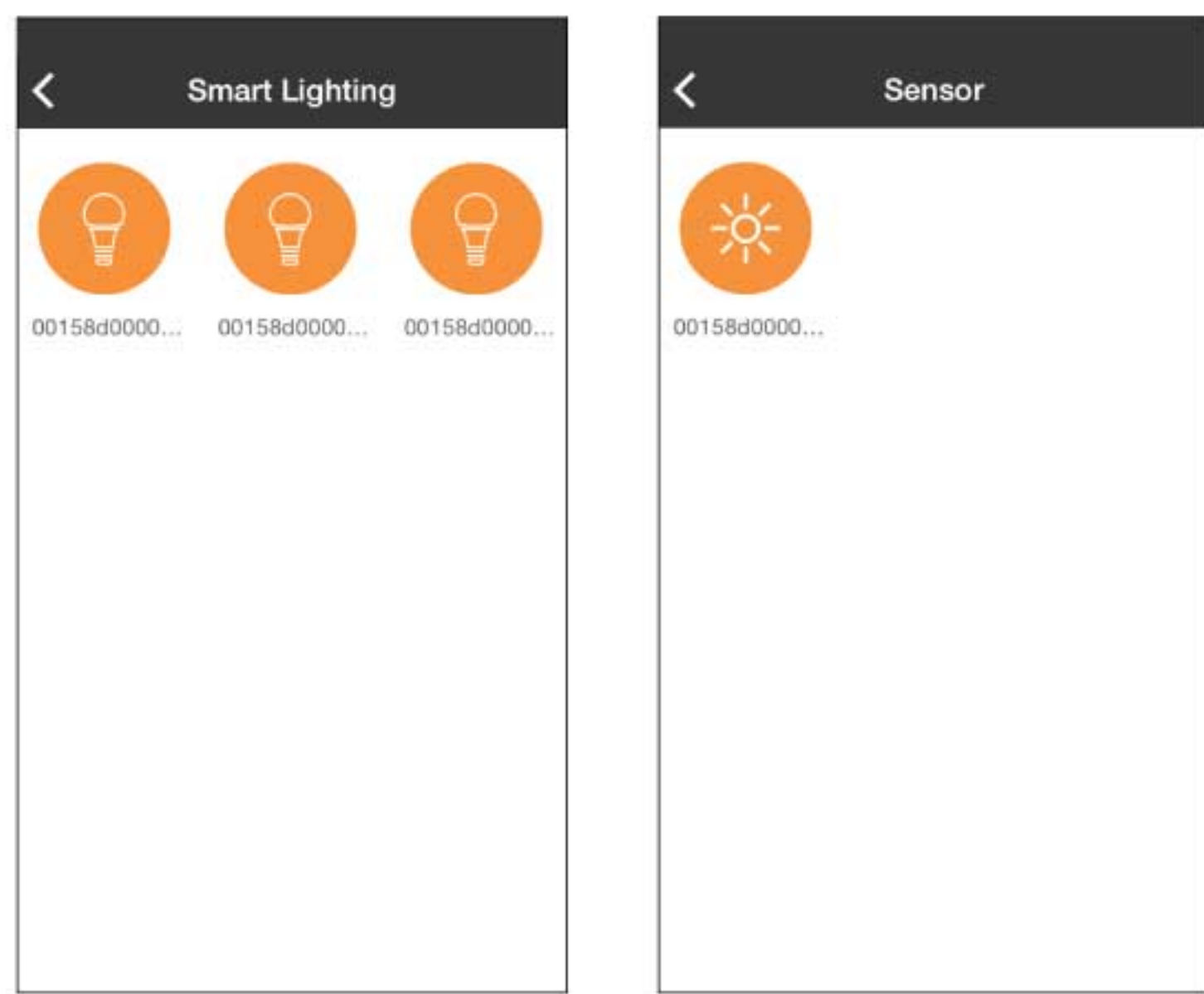


Setting

1. Device management is to manage devices that are added to the App.



3. Tap device icon to control lamp on/off, long press to enter to device edit interface.



Remote Pairing & Unpairing (Without Gateway)

1. Turn switch on, and light will flash twice means it is under factory default mode.
(make sure the light is under factory default mode, or you should physically switch on and off for interval of 2 second until the lighting unit flashes twice indicating reset is successfully.)

2. If lighting units are in factory setting, attempt to pair remote with lighting unit by holding either "1" or "2" until LED indicator starts blinking to pair lighting unit into either group. The lighting unit will blink once to indicate successful pairing.



3. To unpair specific lighting units from grouping, place the remote within close range (10cm) for best result and click the red program button and "1-2" until LED indicator starts blinking.



4. The bulb will blink twice then dim down to indicate successful unpairing.

(Corporate Office)



SIRIJAYA

SIRIJAYA HOLDINGS BERHAD (Co. No. 926496-T)

No.9, Lebuhr Perusahaan Klebang 9, IGB International Industrial Park, 31200 Chemor, Perak Darul Ridzuan.

Tel : +605-292 3888 (Hunting Line), 291 2223, 291 2225, 291 2226, 291 2228 Fax: +605-291 2221, 291 2222

Email: marketing@sirijaya.com Website: www.sirijaya.com

(Malaysia's subsidiaries / factories)

SIRIJAYA INDUSTRIES SDN. BHD. (Co. No. 153828-D)

No.9, Lebuhr Perusahaan Klebang 9, IGB International Industrial Park, 31200 Chemor, Perak Darul Ridzuan.

Tel: +605-292 3888 (Hunting Line), 291 2223, 291 2228

Fax: +605-291 2221, 2912222

Email: marketing@sirijaya.com

Website : www.sirijaya.com

(Singapore's subsidiary)

SJ LITE SINGAPORE PTE. LTD. (Co. No. 200609376-E)

5 Ubi Link #04-00 Singapore 408548.

Tel: +65-6844 3887

Fax: +65-6744 3886

Email: sjlite@singnet.com.sg

SIRIJAYA METAL SDN. BHD. (Co. No. 874633-U)

No.9, Lebuhr Perusahaan Klebang 9, IGB International Industrial Park, 31200 Chemor, Perak Darul Ridzuan.

Tel: +605-292 3888 (Hunting Line), 291 2223, 291 2228

Fax: +605-291 2221, 2912222

Email: sjtrunk@sirijaya.com

Website : www.sirijayametal.com

(Malaysia's sales & marketing)

SNJ LITE TRADING SDN. BHD. (Co. No. 371702-K)

No.9, Lebuhr Perusahaan Klebang 9, IGB International Industrial Park, 31200 Chemor, Perak Darul Ridzuan.

Tel: +605-292 3888 (Hunting Line), 291 2223, 291 2228

Fax: +605-291 2221, 2912222

Email: marketing@sirijaya.com

Website : www.sirijaya.com

SNJ PROJECT SDN. BHD. (Co No 818479-U)

57-1 & 59-1, Jalan PJU 1/37, Block G, Dataran Prima, 47301, Petaling Jaya, Selangor, Malaysia

Tel: +603-7880 3634

Fax: +603-7880 3179

Email: marketing@sirijaya.com

SJ LITE TECHNOLOGY SOLUTIONS SDN. BHD. (Co. No.1227742-U)

57-1 & 59-1, Jalan PJU 1/37, Block G, Dataran Prima, 47301, Petaling Jaya, Selangor, Malaysia

Tel: +603-7880 3634

Fax: +603-7880 3179

Email: sjtech@sirijaya.com

Website : www.sirijaya.com



www.sirijaya.com

