



Your partner in lighting technology

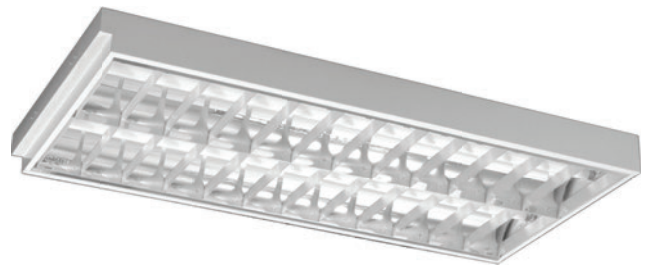
METEOR LED

SAC T8 Mirror Louvre Fitting Series (Metric)



Features & Benefits

Designed for recess metric exposed T-Bar ceiling mounting with single parabolic mirror optic louvre with christmas profile cross blades. Louvres reflection by means of slide lock set and can be lowered and hang from either side.



Application

Ideal for indoor application, offices, retail stores, supermarkets, schools and hotels.

Optics

| | |
|-----------------|---------------------------------|
| Louvre Material | High Quality Anodised Aluminium |
| Louvre Type | Specular |

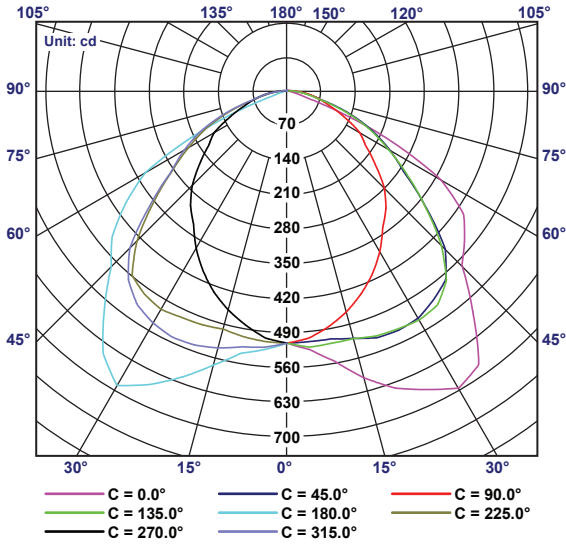
Luminaire Product Description

| | |
|---------------------------|------------------------|
| Mounting | Recessed |
| Housing Material | Cold Roll Steel |
| Coating | Epoxy Polyester Powder |
| Light Source | T8 LED lamp |
| Input Voltage | 240V~, 50Hz |
| Operating Temperature | 45°C |
| Power Factor | >0.9 |
| Ingress Protection | IP20 |
| Insulation Classification | Class I |

Control

| | |
|-----------------|--------------|
| *Dimming Option | Fixed Output |
|-----------------|--------------|

Photometric

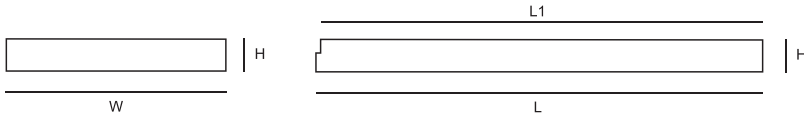


Luminous intensity values are shown radially from centre.
Elevation angle values are shown around the outside of the graph.
Report No : J20202120507

TM5 Utilization Factors

| Utilization factors | | | SHR Nominal = 1.00:1 SHR Maximum = 1.24:1 | | | | | | | | | |
|----------------------|-----|-----|---|------|------|------|------|------|------|------|------|------|
| Room reflection | | | Room index (K) | | | | | | | | | |
| C | W | F | 0.75 | 1 | 1.25 | 1.5 | 2 | 2.5 | 3 | 4 | 5 | |
| 0.7 | 0.5 | 0.2 | 0.56 | 0.67 | 0.75 | 0.81 | 0.88 | 0.93 | 0.97 | 1.01 | 1.04 | |
| | 0.3 | | 0.48 | 0.60 | 0.68 | 0.74 | 0.82 | 0.88 | 0.92 | 0.98 | 1.01 | |
| 0.5 | 0.1 | 0.2 | 0.43 | 0.54 | 0.62 | 0.69 | 0.77 | 0.84 | 0.88 | 0.94 | 0.98 | |
| | 0.5 | | 0.55 | 0.65 | 0.73 | 0.78 | 0.85 | 0.90 | 0.93 | 0.97 | 1.00 | |
| 0.3 | 0.3 | 0.2 | 0.47 | 0.59 | 0.66 | 0.72 | 0.80 | 0.86 | 0.89 | 0.94 | 0.97 | |
| | 0.1 | | 0.42 | 0.53 | 0.61 | 0.67 | 0.76 | 0.82 | 0.86 | 0.91 | 0.95 | |
| 0.0 | 0.5 | 0.2 | 0.53 | 0.63 | 0.70 | 0.76 | 0.82 | 0.87 | 0.90 | 0.94 | 0.96 | |
| | 0.3 | | 0.47 | 0.57 | 0.65 | 0.71 | 0.78 | 0.83 | 0.87 | 0.91 | 0.94 | |
| 0.0 | 0.1 | 0.0 | 0.42 | 0.53 | 0.61 | 0.66 | 0.74 | 0.80 | 0.84 | 0.89 | 0.92 | |
| | 0.0 | | 0.40 | 0.50 | 0.58 | 0.63 | 0.71 | 0.76 | 0.80 | 0.84 | 0.87 | |
| Distribution Factors | | | Floor : | 0.40 | 0.50 | 0.58 | 0.63 | 0.71 | 0.76 | 0.80 | 0.84 | 0.87 |
| | | | Wall : | 0.60 | 0.50 | 0.42 | 0.37 | 0.29 | 0.24 | 0.20 | 0.16 | 0.13 |
| | | | Ceiling : | 0.00 | 0.00 | 0.00 | 0.00 | 0.00 | 0.00 | 0.00 | 0.00 | 0.00 |
| BZ Numbers : | | | 5 | 5 | 4 | 4 | 4 | 4 | 4 | 4 | 4 | |

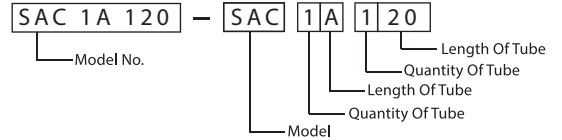
Dimension



Order Reference

| Model | Quantity Of Tube | Length Of Tube |
|-------|------------------|----------------|
| SAC | 1 | A (2ft) |
| | 2 | C (4ft) |
| | 3 | |
| | 4 | |

Example :



Order Information

| Model No. | No. Of Lamp | L(mm) | L1(mm) | W(mm) | W1(mm) | H(mm) | H1(mm) |
|---------------------------|-------------|-------|--------|-------|--------|-------|--------|
| SAC 1A 120 MOL (MM) (1x2) | 1 | 612 | 595 | 295 | - | 90 | - |
| SAC 2A 220 MOL (MM) | 2 | | | | | | |
| SAC 3A 320 MOL (MM) | 3 | | | | | | |
| SAC 4A 420 MOL (MM) | 4 | | | | | | |
| SAC 1C 140 MOL (MM) (1x4) | 1 | 1222 | 1195 | 295 | - | 90 | - |
| SAC 2C 240 MOL (MM) (1x4) | 2 | | | | | | |
| SAC 2C 240 MOL (MM) | 2 | | | | | | |
| SAC 3C 340 MOL (MM) | 3 | | | | | | |
| SAC 4C 440 MOL (MM) | 4 | | | 595 | | | |

Note : Subject to +/- 1.5mm

*Other various types are available upon request.