



SONIC LED

STP Tri-Proof Series

Features

New series of two-colour extruded tri-proof LED fitting. Two side end caps can be rotated by hand for easy pulling out of the gear tray plate. Flexible installation through sliding mounting bracket. The body is made of PC material and sealed by the latest thermal induction technology to ensure IP stability.

Applications

Ideal for parking lot, subway corridor, factory, tunnel, warehouse, railway staircase and industrial areas.

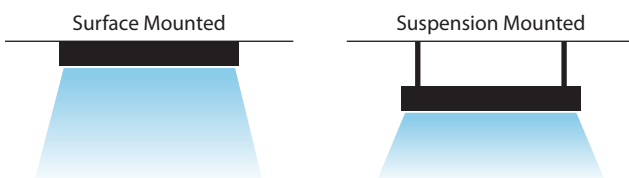
Optics

Diffuser Material	Polycarbonate
Diffuser Pattern	Frosted

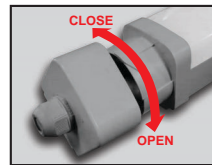
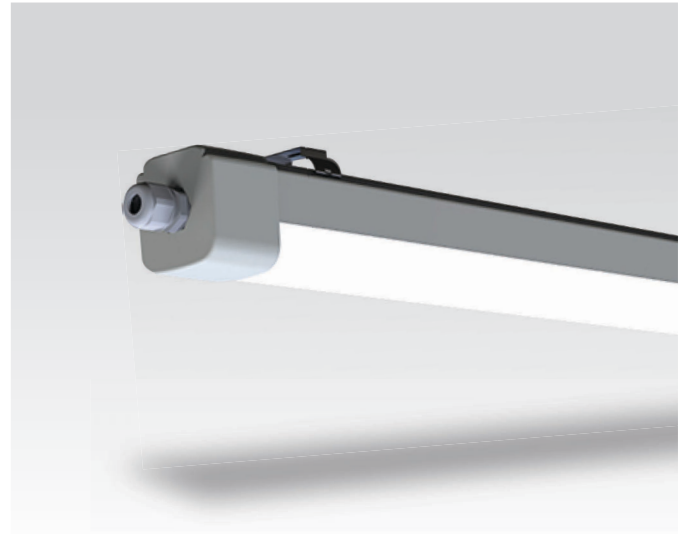
Optional Features / Accessories

Dali/1-10V Dimming Control
Motion Sensor, Photo Cell
IoT Smart Lighting Control

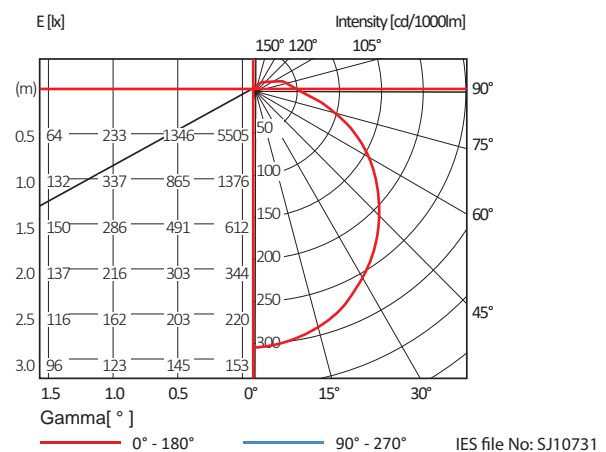
Mounting



* This luminaires should be mounted in a sheltered areas to minimize exposure to direct sunlight and do not install in the high concentration of acidic or alkaline environment.



Lighting Data





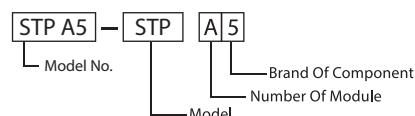
Specifications

Model	STP A5	STP B5	STP C5
Nominal Power	16W	31W	36W
Nominal System Lumen Output	1974 lm	4552 lm	5638 lm
Nominal System Efficacy	123 lm/W	147 lm/W	157 lm/W
LED Driver	Tridonic LC		
Light Source	Tridonic LLE ADV		
Colour Temperature (CCT)	3000K/4000K/6500K		
Input Voltage	220-240V, 50/60Hz		
Colour Rendering Index (CRI)	>80		
Luminaire Rated Life	50,000hr (L70B50)		
Operating Temperature	-20°C~+45°C		
Power Factor	>0.9PF		
Total Harmonic Distortion	≤20%		
Insulation Class	Class I		
Housing Material	Polycarbonate		
Ingress Protection	IP65		
Impact Protection	IK08		
Weight	0.6kg	1.0kg	1.2kg

Order Reference

Model	Number Of Module	Brand Of Component
STP	A (1 module) B (2 modules) C (3 modules)	5 - Tridonic

Example :



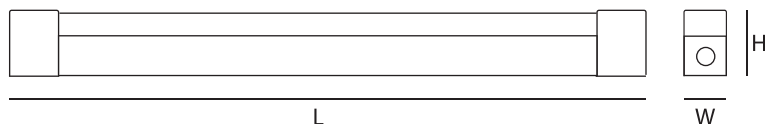
Order Information

Model No.	L(mm)	W(mm)	H(mm)
STP A5	600	65	68
STP B5	1200	65	68
STP C5	1500	65	68

Note : Subject to +/- 1.5mm

*Other various types are available upon request.

Dimensions



Accessories



PVC Cable Gland, Brackets, Screws & Wall Plugs