



# SONIC LED

## SFS LED Linear Diffused Batten Series

### Features

Provide high efficiency and even light distribution. Easy access for installation and maintenance. Allows end to end installation.

### Applications

Ideal for most application in commercials, industrial and domestic areas.

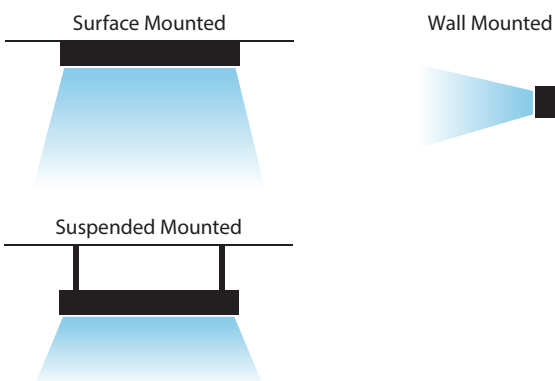
### Optics

Diffuser Material	PMMA
Diffuser Pattern	Frosted

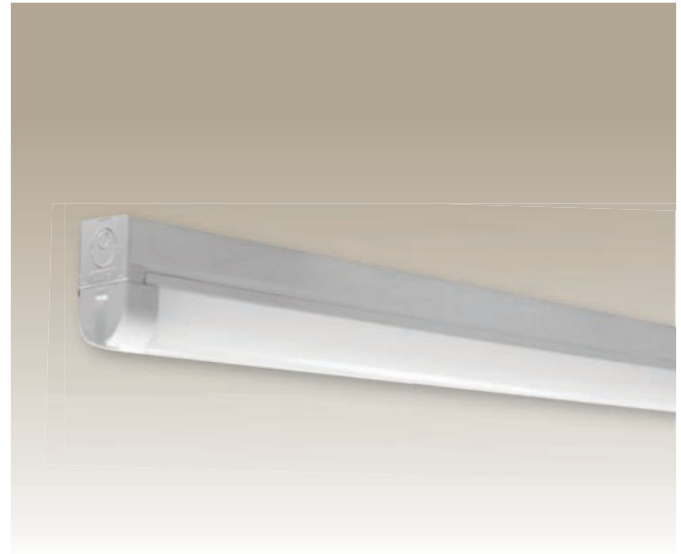
### Optional Features / Accessories

Dali/1-10V Dimming Control
----------------------------

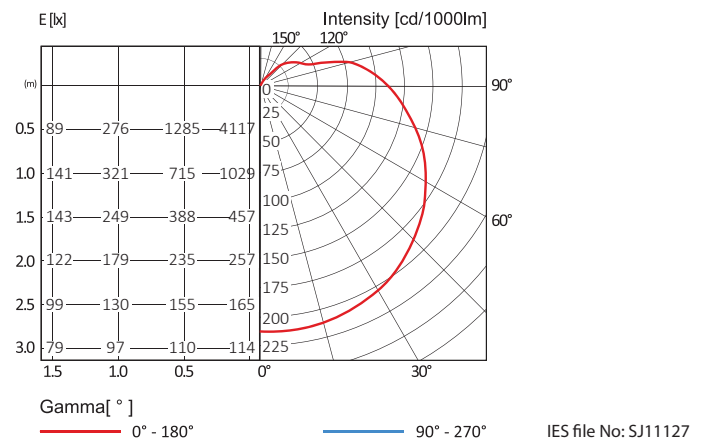
### Mounting



\*All LED component are subject to the LED component manufacturers warranty terms and condition.



### Lighting Data





## Specifications

Model	SFS A5 SO (2ft)	SFS A5 HO (2ft)	SFS A7 SO (2ft)	SFS A7 HO (2ft)
Nominal Power	14W	20W	14W	20W
Nominal System Lumen Output	1720 lm	2330 lm	1570 lm	2280 lm
Nominal System Efficacy	123 lm/W	117 lm/W	112 lm/W	114 lm/W

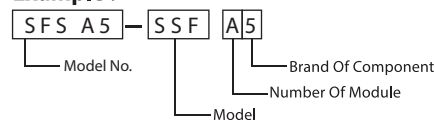
  

Model	SFS B5 SO (4ft)	SFS B5 HO (4ft)	SFS B7 SO (4ft)	SFS B7 HO (4ft)
Nominal Power	25W	36W	25W	36W
Nominal System Lumen Output	3680 lm	4860 lm	3230 lm	4720 lm
Nominal System Efficacy	147 lm/W	135 lm/W	129 lm/W	131 lm/W
LED Driver	Tridonic LC	Tridonic LC	Osram IT FIT	Osram IT FIT
Light Source	Tridonic LLE	Tridonic LLE	Osram BA-LIN	Osram BA-LIN
Colour Temperature (CCT)	3000K/4000K/6500K			
Input Voltage	240V~50Hz			
Colour Rendering Index (CRI)	>80			
Luminaire Rated Life	50,000hrs (L70B50)			
Operating Temperature	-20°C ~ +45°C			
Power Factor	>0.9PF			
Total Harmonic Distortion	≤20%			
Insulation Class	Class I			
Housing Material	Cold Roll Steel			
Ingress Protection	IP20			

## Order Reference

Model	Number Of Module	Brand Of Component
SFS	A ( 1 module ) B ( 2 modules ) C ( 3 modules ) D ( 4 modules )	4 - Philips 5 - Tridonic 7 - Osram

### Example :



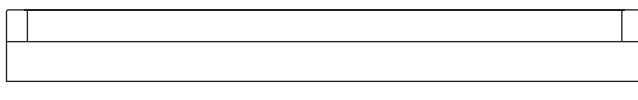
## Order Information

Model No.	L(mm)	W(mm)	H(mm)
SFS A5 SO (2ft)	622	39	66
SFS A5 HO (2ft)	622	39	66
SFS A7 SO (2ft)	622	39	66
SFS A7 HO (2ft)	622	39	66
SFS B5 SO (4ft)	1178	39	66
SFS B5 HO (4ft)	1178	39	66
SFS B7 SO (4ft)	1178	39	66
SFS B7 HO (4ft)	1178	39	66

Note : Subject to +/- 1.5mm

\*Other various types are available upon request.

## Dimensions



W  
20